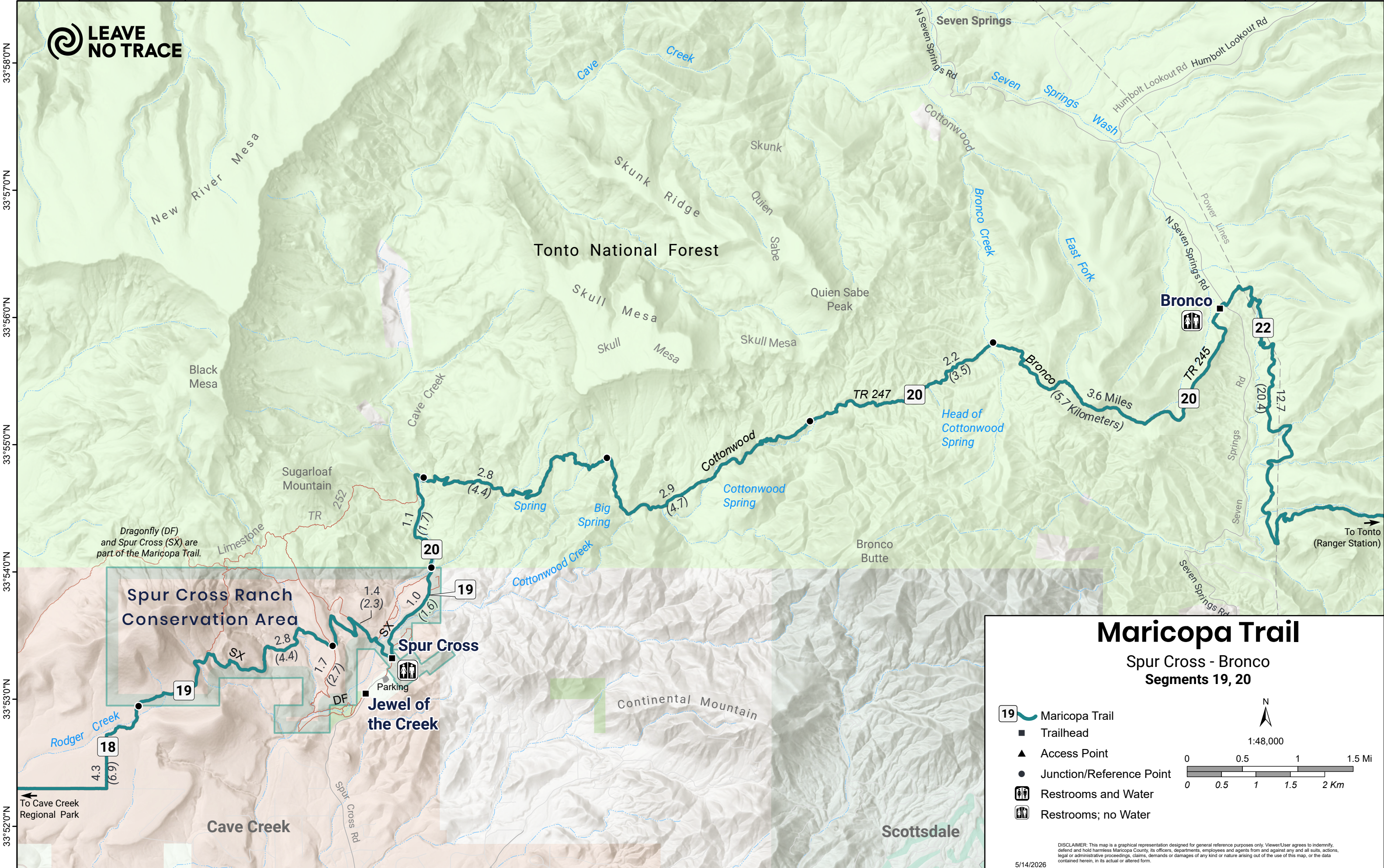


112°0'0"W 111°59'0"W 111°58'0"W 111°57'0"W 111°56'0"W 111°55'0"W 111°54'0"W 111°53'0"W 111°52'0"W 111°51'0"W 111°50'0"W 111°49'0"W 111°48'0"W



## Maricopa Trail

### Spur Cross - Bronco Segments 19, 20

- 19 Maricopa Trail
- Trailhead
- Access Point
- Junction/Reference Point
- Restrooms and Water
- Restrooms; no Water

N

1:48,000

0 0.5 1 1.5 2 Km

DISCLAIMER: This map is a graphical representation designed for general reference purposes only. Viewer/User agrees to indemnify, defend and hold harmless Maricopa County, its officers, departments, employees and agents from and against any and all suits, actions, legal or administrative proceedings, claims, demands or damages of any kind or nature arising out of the use of this map, or the data contained herein, in its actual or altered form.

5/14/2026

To Cave Creek Regional Park

To Tonto (Ranger Station)