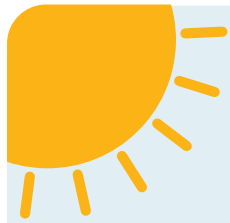




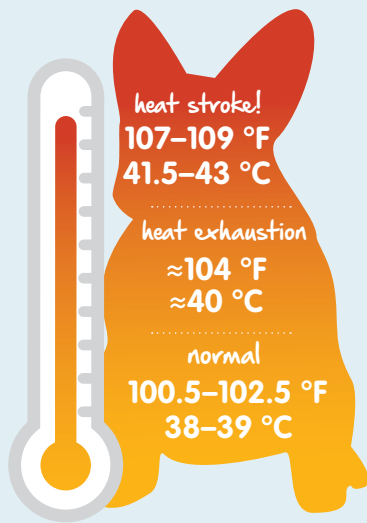
spread the word, save dogs' lives!

In just minutes, the temperature inside a car can soar to dangerously high levels, leaving pets at **severe risk of heatstroke and even death**. Yet every year, countless dogs die from being left in hot cars.



heat stroke in dogs

a dog's body temperature



signs of heat stroke

- ⊘ Heavy panting, difficulty breathing, excessive thirst
- ⊘ Bright red tongue and mucus membranes, which turn grey as shock sets in
- ⊘ Thick saliva, drooling, vomiting, and/or diarrhea
- ⊘ Unsteadiness and staggering
- ⊘ Lethargy

! By the time the signs of heat stroke are visible, it's often too late.

some dogs are more at risk:



short-nosed



long-haired



young

the dangers of heat stroke



104 °F
40 °C
body temp.



>15 mins
of suffering



- ✓ collapse
- ✓ seizures
- ✓ coma
- ✓ organ failure
- ✓ death

sources: pets.webmd.com/dogs/high-fever-in-dogs; www.cliniciansbrief.com/sites/default/files/Canine%20Heatstroke.pdf; www.petmd.com/dog/conditions/cardiovascular/c_dg_heat_stroke

learn more at [GoPetplan.com/driven-to-bark](https://www.GoPetplan.com/driven-to-bark)