



San Tan - Goldmine Trailhead Public Meeting

June 9, 2016 at 6:30pm

How did we get here?



- San Tan Master Plan completed in 2004
- Master Plan (Wagon Wheel Road Trailhead)
 - Secondary Trailhead at Goldmine
 - Hiking
 - Mountain Biking
 - Comfort Station (restroom)
 - Septic System
 - Self-pay Iron Ranger
 - Access Drive
 - Signage
 - Utilities (water and power)
 - Trailhead size one-half to one acre
 - Buffer adjacent landowners
 - Allow for bicycle, pedestrian, and equestrian access



Maricopa County
San Tan Mtn. Regional Park



PINAL COUNTY
wide open opportunity



How did we get here?

- 2004 – 2015 Growth in Attendance
 - From 2012 to 2015 : a paid attendance growth rate of 222%
 - Issues
 - Quality of Life for neighborhood
 - Vehicles parked on neighborhood roads and personal property
 - Visual impacts
 - Parties after hours
 - Paying fees
 - Trash
 - Natural Resource Damage



Maricopa County
San Tan Mtn. Regional Park



How did we get here?

- 2015 – Capacity Reached– Time to Take Action
 - Maricopa County Parks
 - Parking Lot Alignment
 - Install Gate
 - Pinal County Parks
 - Planning Process
 - Conceptual Design
 - Maricopa County Sheriff’s Office
 - Increased Patrols
 - Queen Creek
 - Traffic Analysis
 - Roadway Signs
 - Park Patrols



Maricopa County
San Tan Mtn. Regional Park



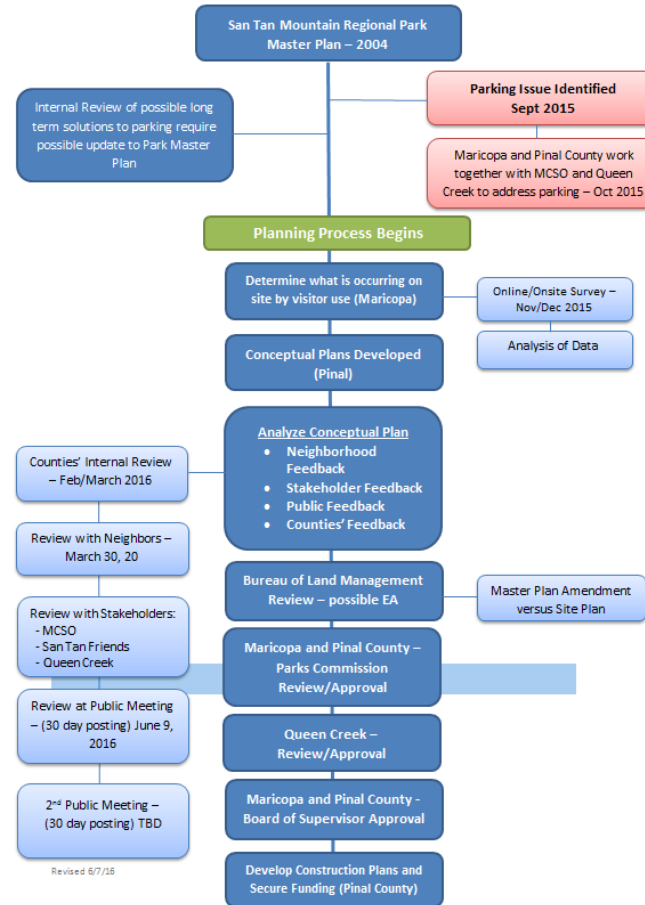
PINAL COUNTY
wide open opportunity



Planning Process



San Tan Mountain Regional Park – Goldmine Trailhead



Maricopa County
San Tan Mtn. Regional Park



PINAL COUNTY
wide open opportunity



Press Release/Survey Material



- Distributed to 1,000 Friends of San Tan, Neighbors, Media, and Public
- 100 Individuals signed petition started by a park visitor



Maricopa County
San Tan Mtn. Regional Park



PINAL COUNTY
wide open opportunity



Facebook Stats



Details
Reported stats may be delayed from what appears on posts

San Tan Mountain Regional Park
Published by Mc Parks [?] · November 5, 2015 · 🌐

📍 GOLDMINE TRAILHEAD UPDATE AND SURVEY:

When you visit San Tan Mountain Regional Park and use the Goldmine Trailhead, we would appreciate your feedback via a quick survey: <https://www.surveymonkey.com/r/goldminetrailhead>. The survey is confidential, and we are not collecting personal information.

We have also included an update on the area in the news release below. Thank you for your assistance!

Agencies working together to resolve parking issues

Agencies working together to resolve parking issues (Queen Creek) – In 2004, Maricopa County's Parks and Recreation Department began implementing...

LNKS.GD

Get More Likes, Comments and Shares
Boost this post for \$5 to reach up to 700 people.

76 people reached Boost Post

Wacky Howard, Amber Blair Stahr and 7 others · 2 Comments · 11 Shares

Like
Comment
Share
Buffer
Hootlet

2,976 People Reached

24 Likes, Comments & Shares

9 Likes	9 On Post	0 On Shares
4 Comments	2 On Post	2 On Shares
11 Shares	11 On Post	0 On Shares

195 Post Clicks

1 Photo Views	105 Link Clicks	89 Other Clicks
-------------------------	---------------------------	---------------------------

NEGATIVE FEEDBACK

1 Hide Post	1 Hide All Posts	
0 Report as Spam	1 Unlike Page	

Maricopa County
San Tan Mtn. Regional Park

PINAL COUNTY
wide open opportunity

Survey Results



- Survey via Survey Monkey from November 5, 2015 through December 13, 2015
- Multiple On-site Dates
- Approximately 264 individuals responded
 - Provided 446 comments
 - Increase Parking – 124 comments
 - Improved Trailhead – 45
 - Add Restroom – 94 comments
 - Equestrian Parking – 17 comments
 - Better Signage – 12 comments
 - Additional Trails – 26 comments
 - Keep Primitive – 10 comments
 - Address in Operations (procedures)- 59 comments
 - Not in Scope of Planning Effort – 12 comments
 - General Statement – 102



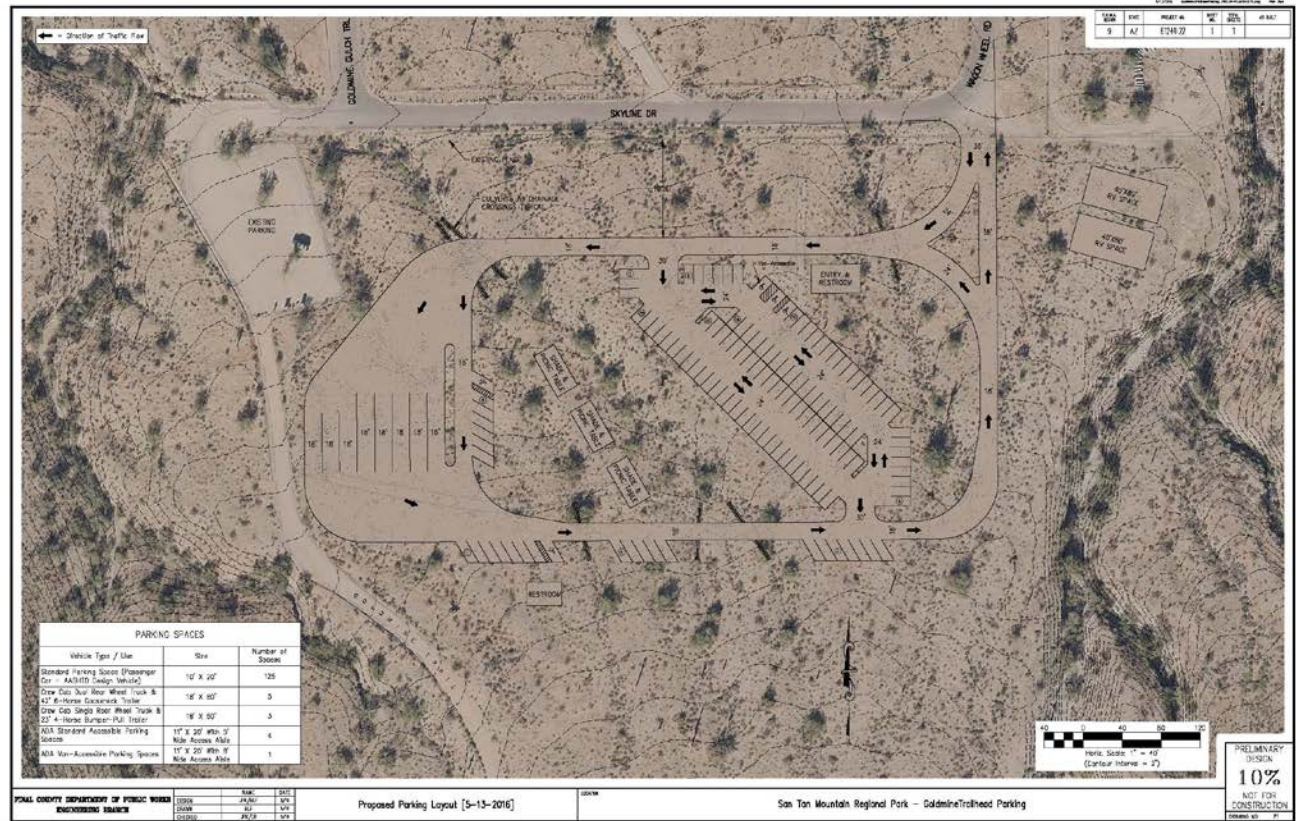
Maricopa County
San Tan Mtn. Regional Park



PINAL COUNTY
wide open opportunity



10% Conceptual Design



Maricopa County
 San Tan Mtn. Regional Park



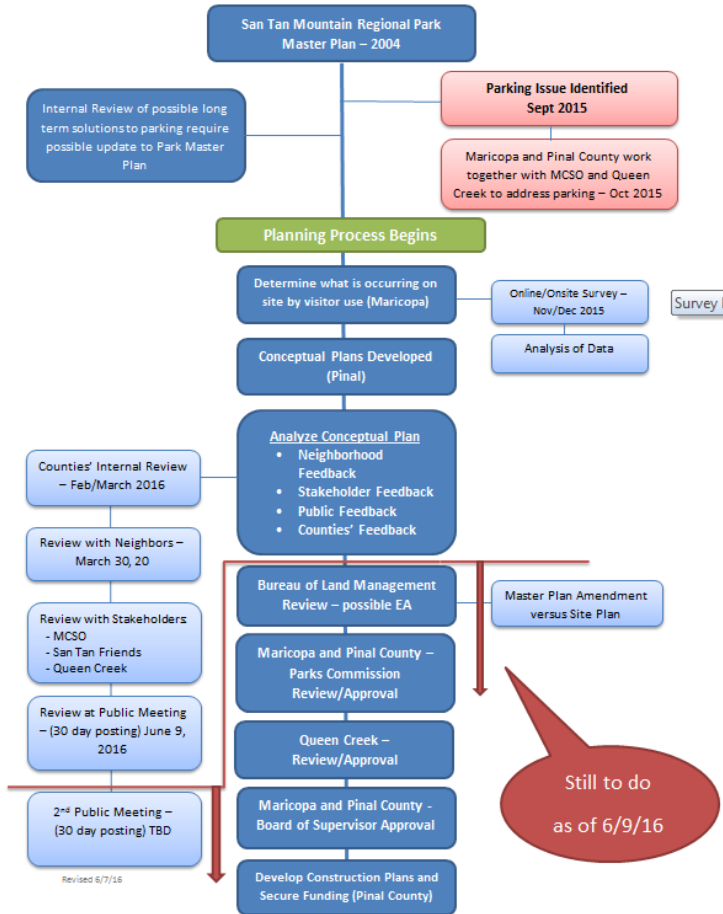
PINAL COUNTY
wide open opportunity



Planning Process



San Tan Mountain Regional Park – Goldmine Trailhead



Maricopa County
San Tan Mtn. Regional Park



PINAL COUNTY
wide open opportunity



Questions?



- Visit Website for project information:
maricopacountyparks.net/park-locator/san-tan-mountain-regional-park/
 - Under Park Information/Park Projects
- Use Comment Cards provided this evening *or* visit the park project page for online survey
- Comments open from June 10, 2016 to July 15, 2016 (close of business day)
- Contact Teresa Retterbush at TeresaRetterbush@mail.maricopa.gov or 928-501-9200



Maricopa County
San Tan Mtn. Regional Park

