






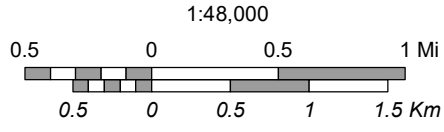


Maricopa Trail

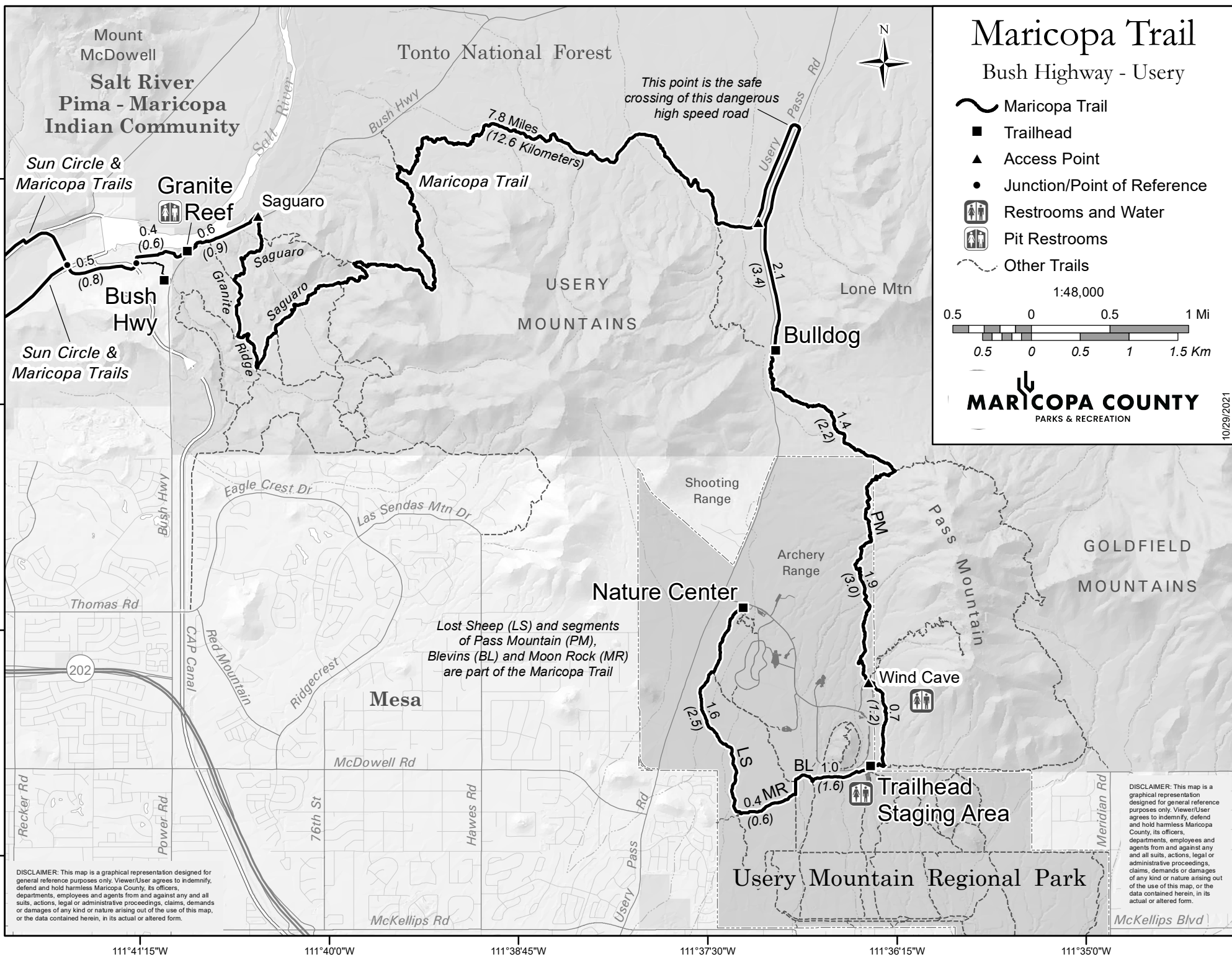
Bush Highway - Usery

-  Maricopa Trail
-  Trailhead
-  Access Point
-  Junction/Point of Reference
-  Restrooms and Water
-  Pit Restrooms
-  Other Trails



MARICOPA COUNTY
PARKS & RECREATION

10/29/2021



DISCLAIMER: This map is a graphical representation designed for general reference purposes only. Viewer/User agrees to indemnify, defend and hold harmless Maricopa County, its officers, departments, employees and agents from and against any and all suits, actions, legal or administrative proceedings, claims, demands or damages of any kind or nature arising out of the use of this map, or the data contained herein, in its actual or altered form.

DISCLAIMER: This map is a graphical representation designed for general reference purposes only. Viewer/User agrees to indemnify, defend and hold harmless Maricopa County, its officers, departments, employees and agents from and against any and all suits, actions, legal or administrative proceedings, claims, demands or damages of any kind or nature arising out of the use of this map, or the data contained herein, in its actual or altered form.

Lost Sheep (LS) and segments of Pass Mountain (PM), Blevins (BL) and Moon Rock (MR) are part of the Maricopa Trail