



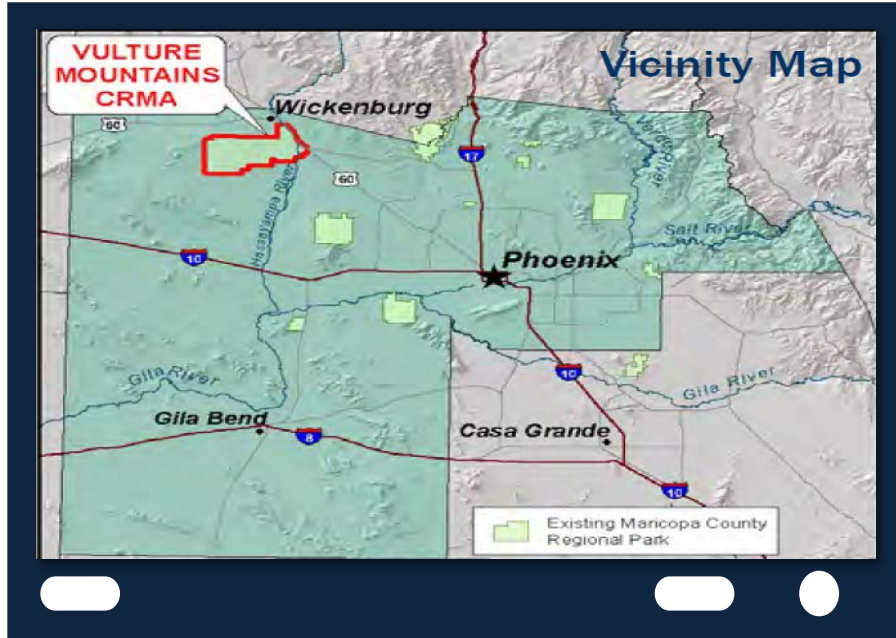
Vulture Mountains Recreation Area

R.J. Cardin, Maricopa County Parks and Recreation Department, Director

June 2019

Vulture Mountains Recreation Area

Vicinity Map



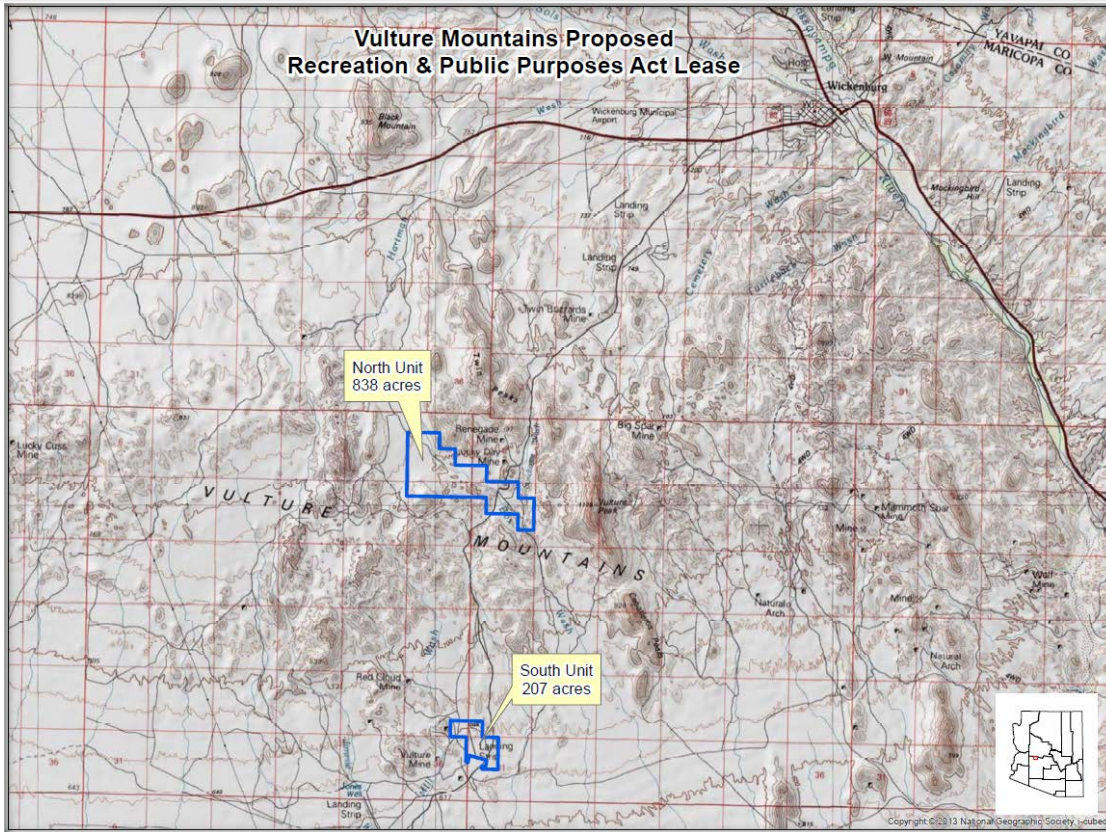
FROM PHOENIX

- Roughly 75 miles / 1 hour 20 minutes



Vulture Mountains Recreation Area

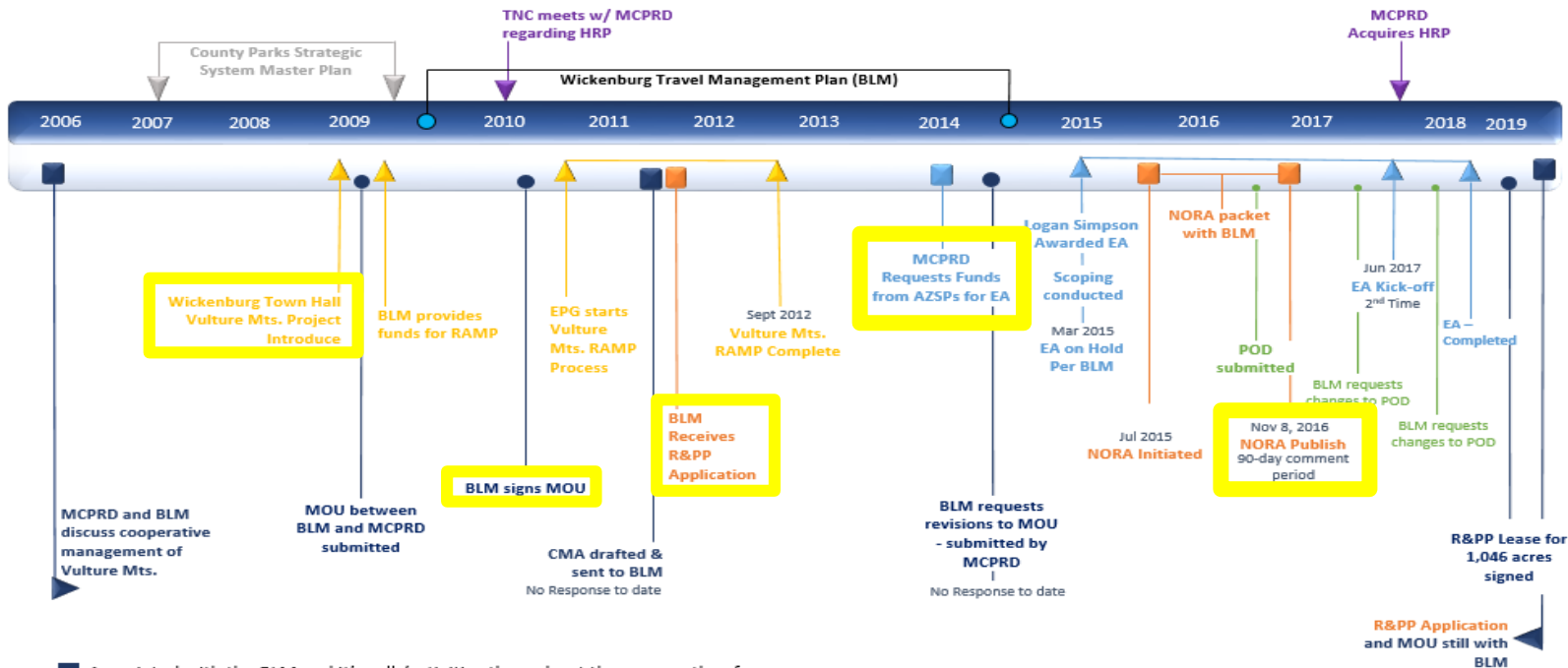
Recreation & Public Purposes Land



R&PP land will be fee regulated providing direct visitor benefits and facilities for what would otherwise not be provided to the public without the presence of a Maricopa County park. All park revenues will be returned for park operations and future improvements.

Vulture Mountains Recreation Area

Timeline



- Associated with the BLM and it's roll /activities throughout the process thus far
- Associated with the Recreation Area Management Plan (RAMP - Park Master Plan)
- Associated with the R&PP Development and Notice of Realty Action (NORA)
- Associated with the Environmental Assessment (EA)
- Associated with the Plan of Development (POD) for the EA, RAMP, and R&PP Development
- Associated with The Nature Conservancy and the Hassayampa River Preserve

Hassayampa River Preserve

Partnership Creates Recreation Gem in the Desert



In January 2014, the Nature Conservancy and Maricopa County's Parks and Recreation Department unveiled their cooperative efforts to include the Hassayampa River Preserve as part of Vulture Mountains Recreation Area, including new site design plans.

Hassayampa River Preserve

Agreement to Donate



In April 2017, the Nature Conservancy agreed to donate two parcels of land and the Maricopa County Board of Supervisors accepted TNC's offer:

- a 65.3 acre parcel of land described in the Agreement as Fee Property (the Visitor's Center and Palm Lake); and
- a 646 acre parcel of land described in the Agreement as "Leased Property" (river corridor and Sonoran Desert upland).

Hassayampa River Preserve

Improvements



Park Projects:

- **Facility improvements:**

- Visitor Center new front desk, retail shelving, flooring, window treatments and back porch
- Building structural repairs, electrical system upgrades, roofing, air-conditioner, and painting
- New accessible restroom building

- **Trails:** Signage replaced and improvements made to trails

- **Grounds:** Picnic area, parking lot, road improvements, fire fuel thinning, and new decorative fencing

Lease Signing

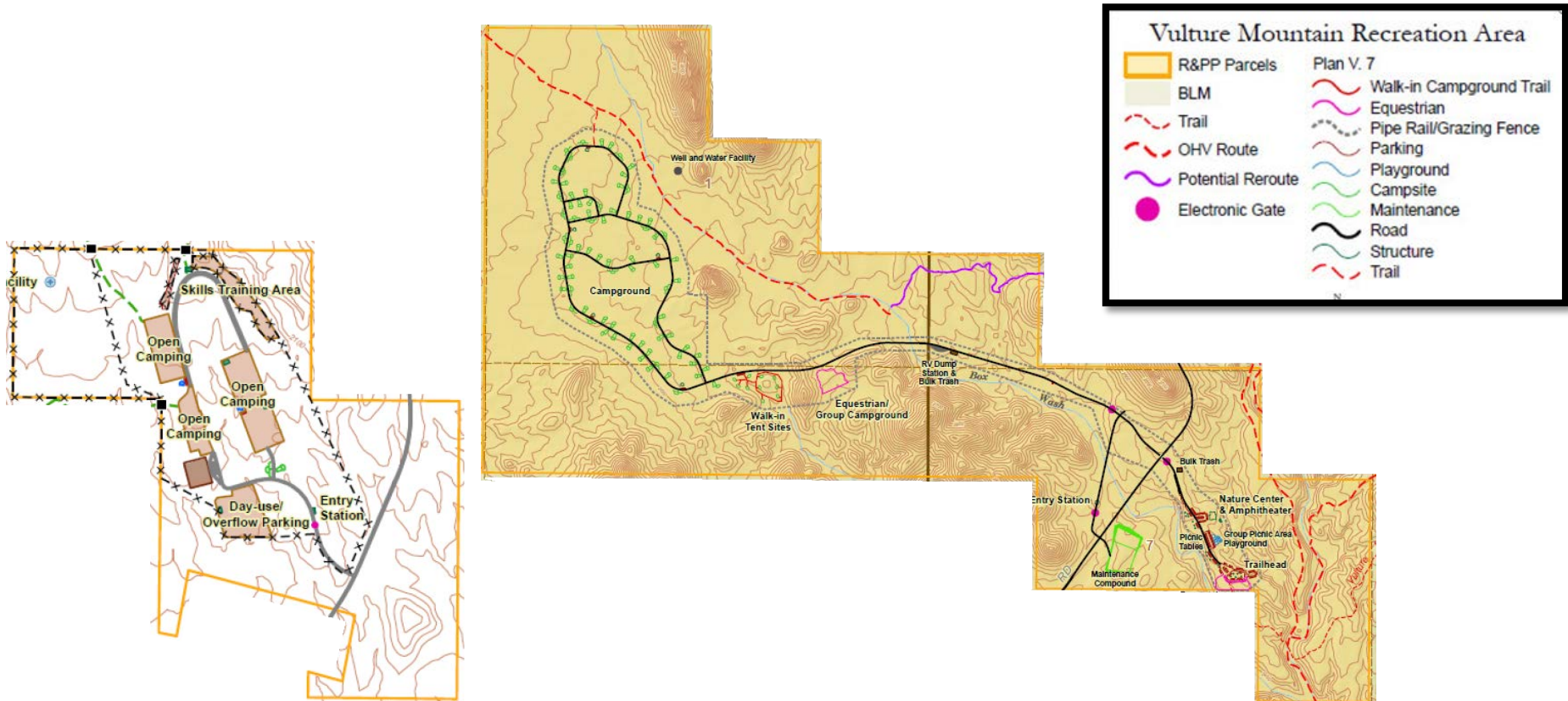
March 27, 2019

Maricopa County Board of Supervisors and Bureau of Land Management sign lease agreement allowing the Parks and Recreation Department to enter into a Recreation and Public Purposes (R&PP) lease with the BLM Hassayampa Field Office. Under the lease, the Parks Department is responsible for managing approximately 1,046 acres of public lands near Wickenburg, Arizona.



R&PP North and South Parcel Boundaries

1,046 acres – 13 square miles



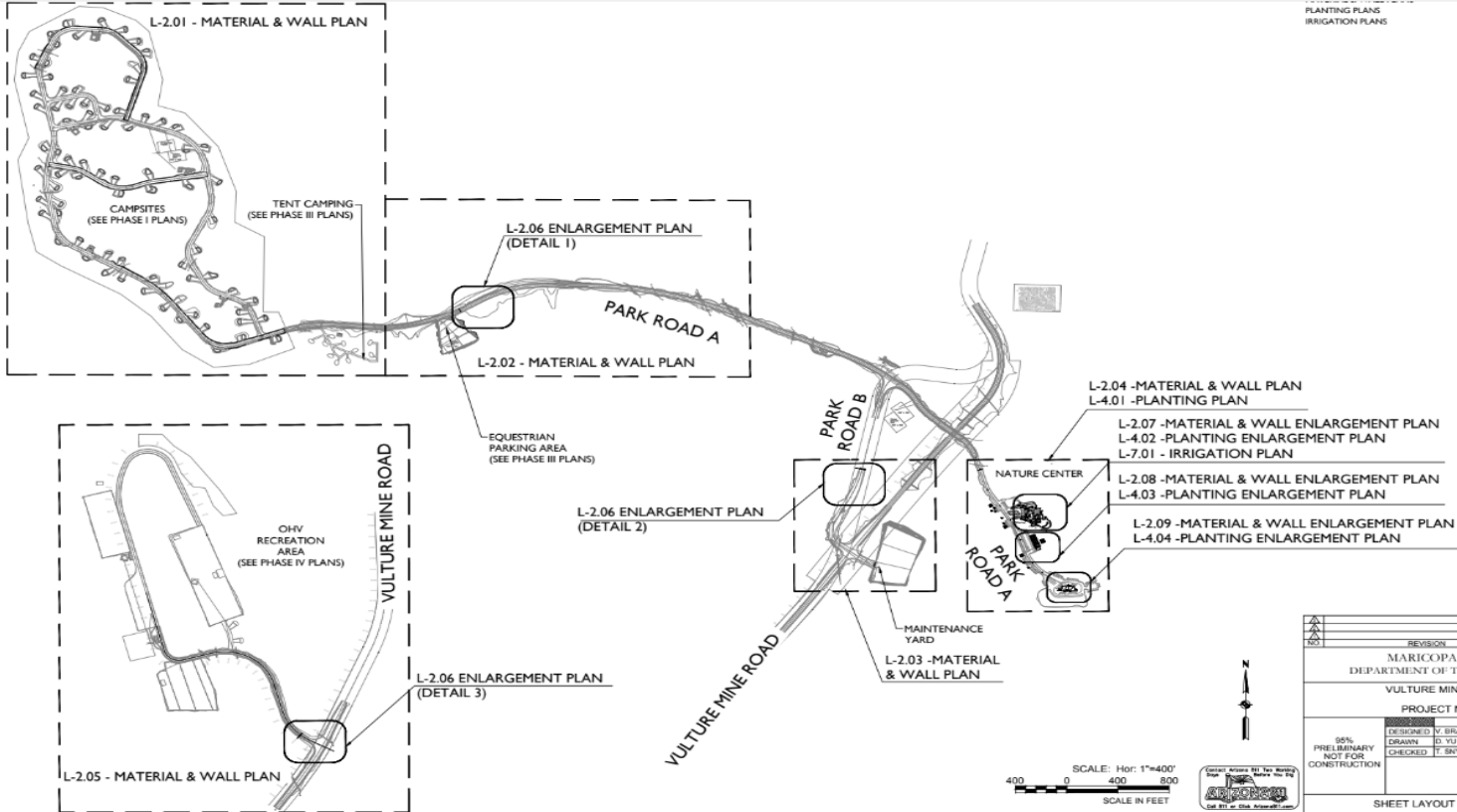
Phase One: North Lease Area

County Park Roads and Utility Infrastructure

6/20pm May 21, 2019

S:\Projects\2017\17-01317\17-01317\Drawings\Construction\Drawings\T1419_01.dwg (Landscape - Plan - Sheet - Layout Key) (1) .dgn

PLANTING PLANS
IRRIGATION PLANS
L-4.01 - L-4.04
L-7.01



NO.	REVISION	BY	DATE

MARICOPA COUNTY
DEPARTMENT OF TRANSPORTATION
VULTURE MINE REC AREA
PROJECT NO. TT419

DATE	BY	DATE
DESIGNED	IY, BRAYO	05/23/19
DRAWN	D, YU	05/23/19
CHECKED	T, SNYDER	05/23/19

50%
PRELIMINARY
NOT FOR
CONSTRUCTION

EPS

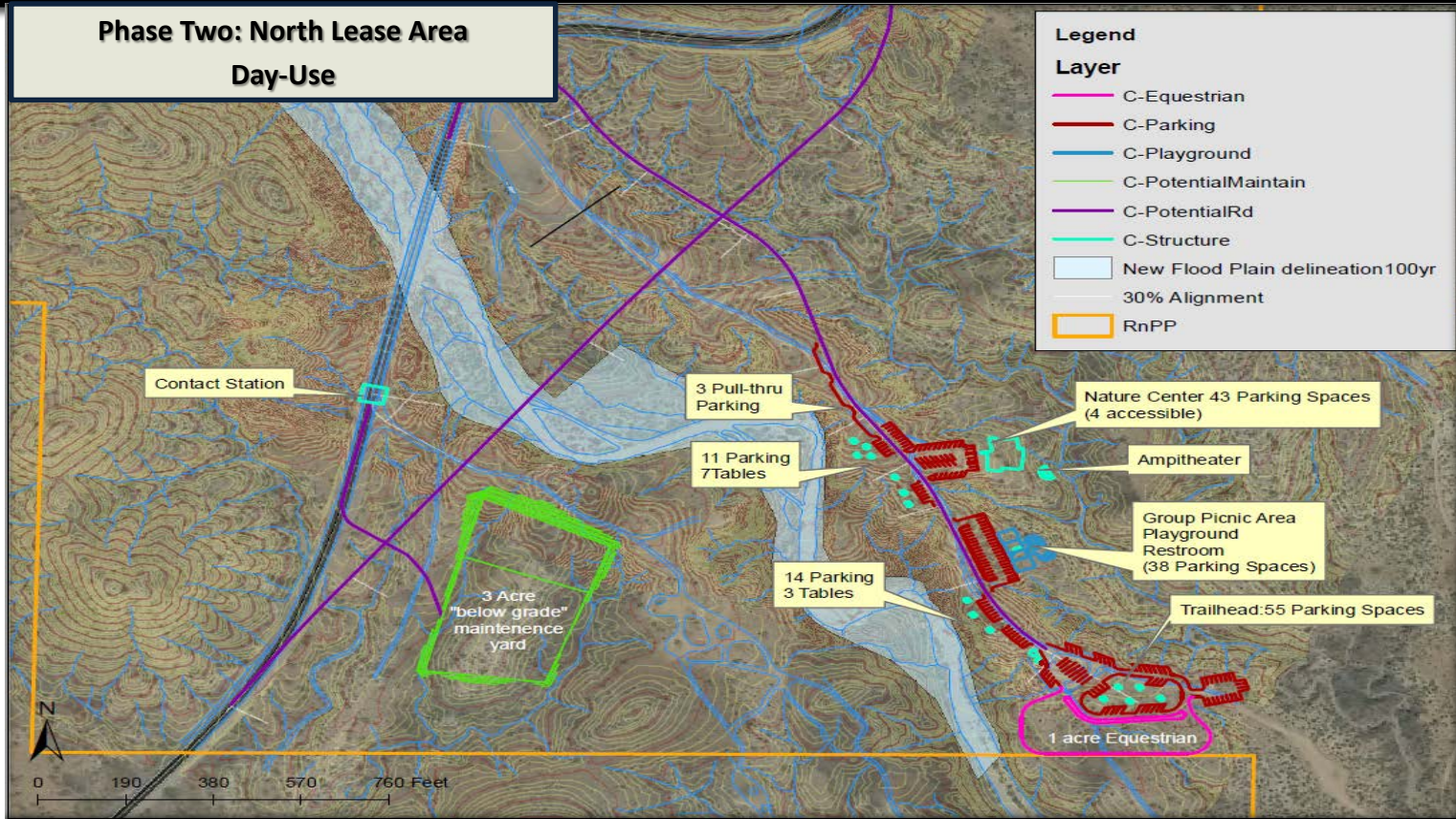
SHEET LAYOUT KEY

TRACS NO. _____

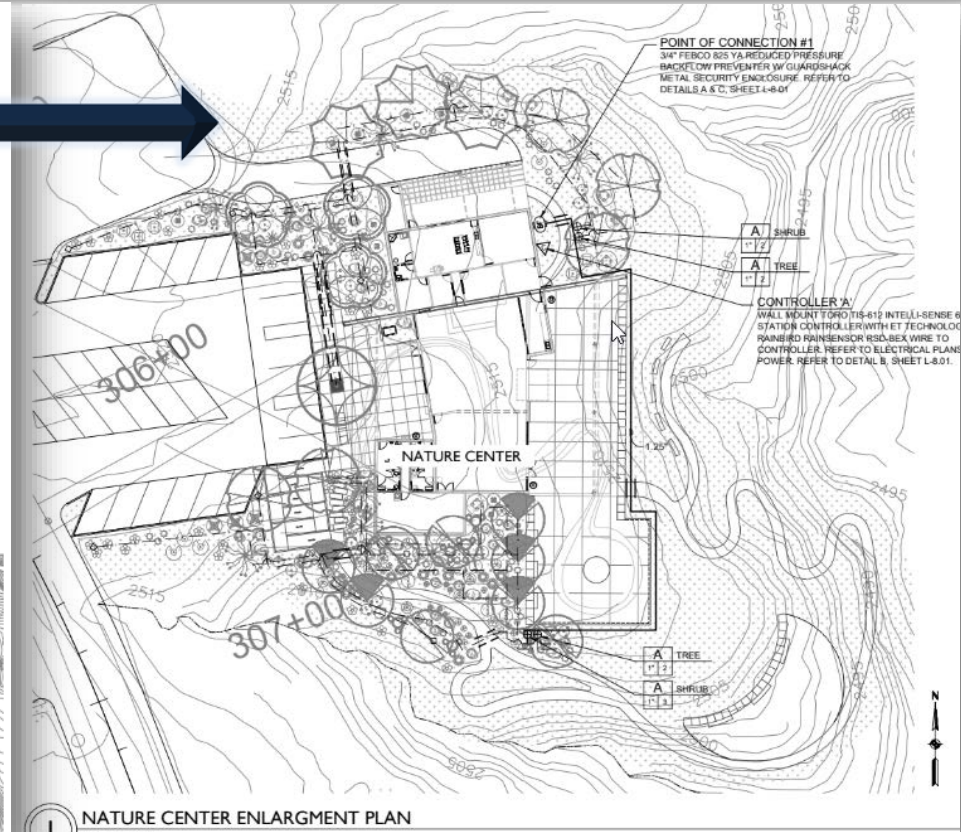
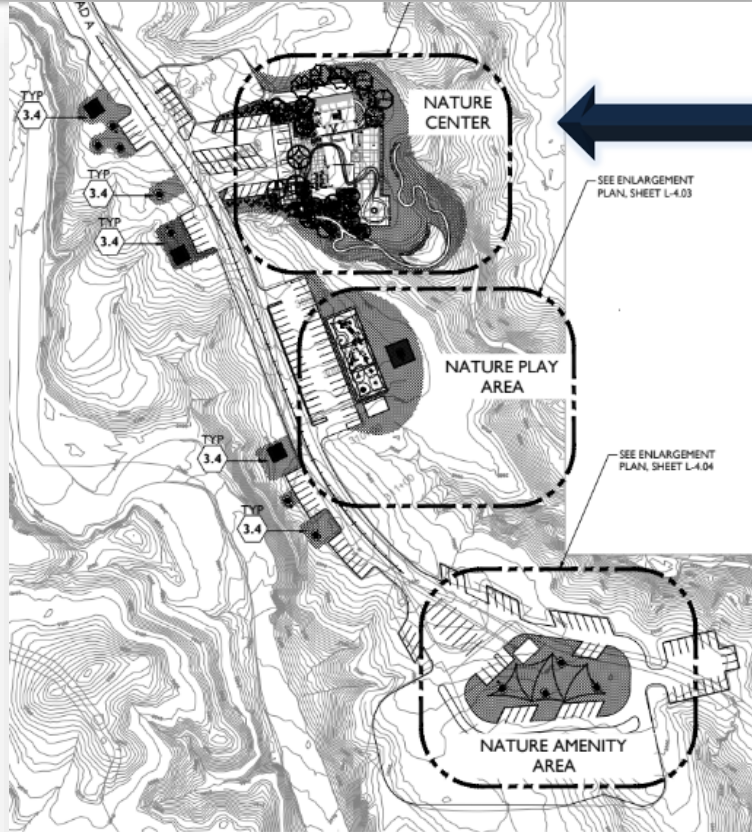
SHEET L-1.01

Phase Two: North Lease Area

Day-Use



Phase Two: Day-Use Nature Center Design



1 NATURE CENTER ENLARGEMENT PLAN
Scale: 1"=20'-0"

Phase Two: Day-Use

Nature Center Front Profile



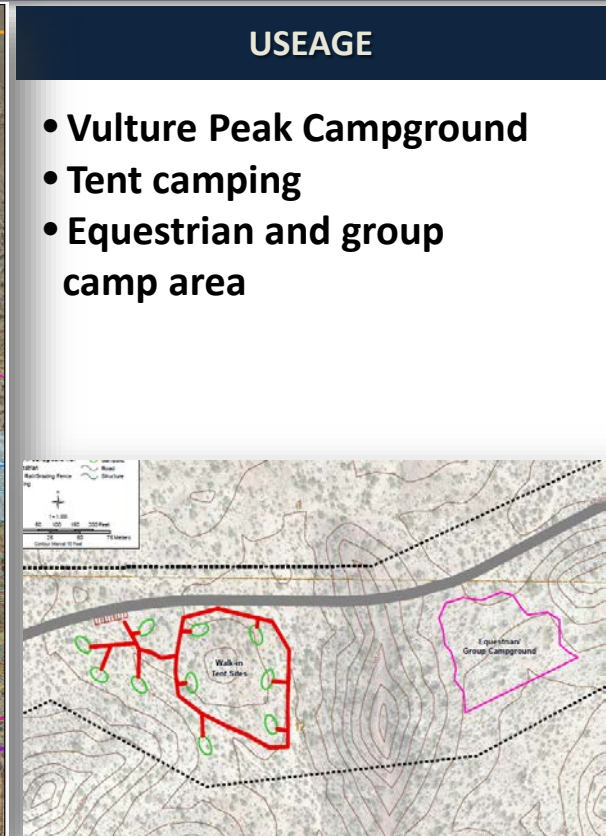
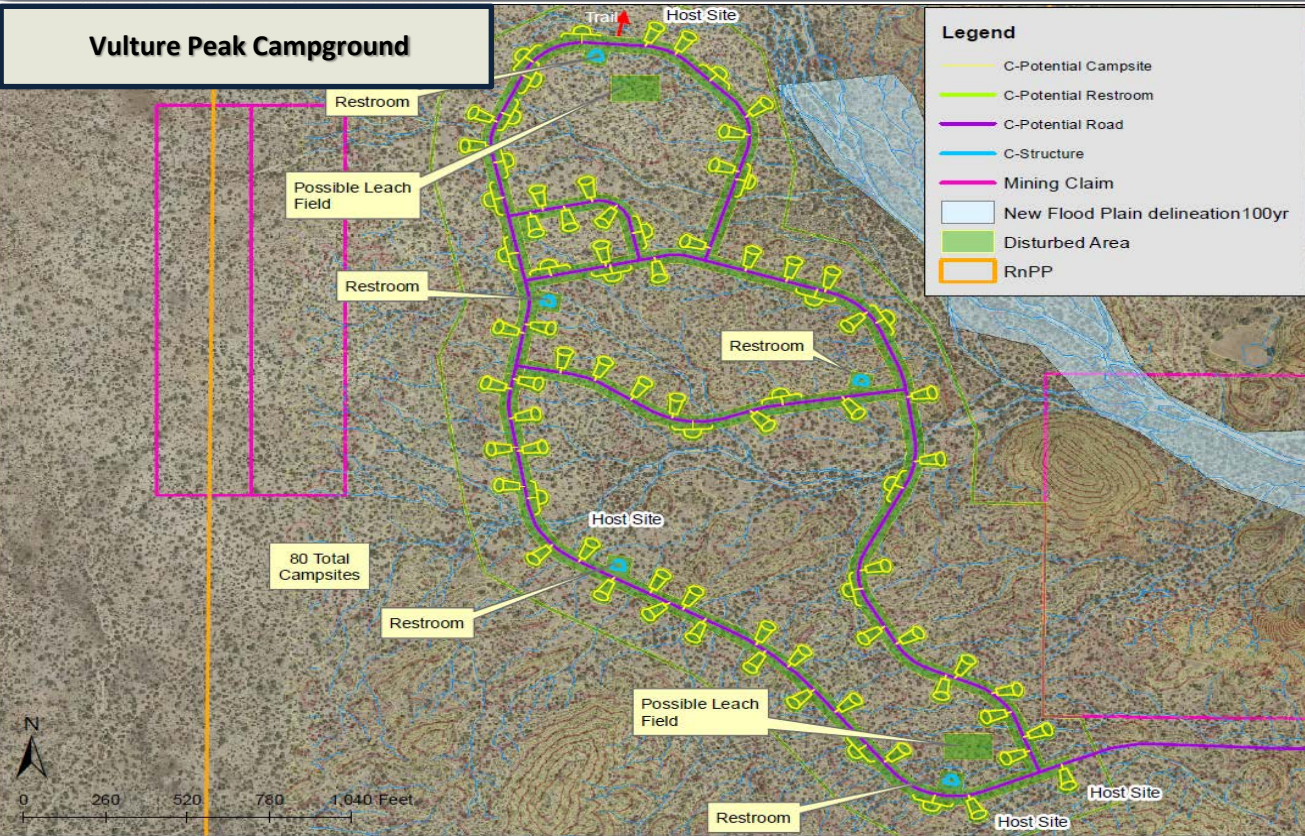
Phase Two: Day-Use

Nature Center Back Patio Profile



Phase Three: North Lease Area

Campground



Phase Four: South Lease Area

OHV Trailhead, Staging & Group Camp

- Formalized access road
- Group camping
- Picnicking
- Training and staging areas for OHV's
- Host sites



Updates...



- EA completed February 2019
- R&PP Lease Granted April 2019
- 95% Plan Development summer 2019
- 100% Plan Development / CD's for Park and Roadway Design (MCDOT/EPS)
Fall 2019
- Tentative Vulture Mine Road and Park Road(s) construction to start July 2020
(FY21)
 - Phase One – Roadway(s) and park utility infrastructure

Questions?

