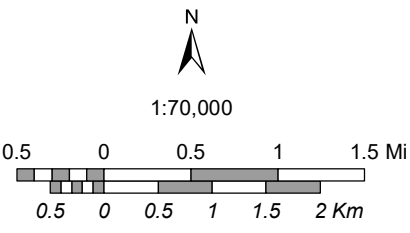


Maricopa - Sun Circle Trails

Guadalupe - South Mountain - Tres Rios
Segments 6, 7, 8, 9

- Sun Circle, Maricopa Trail
- Trailhead
- Access Point
- Junction/Reference Point
- Restrooms and Water
- Portable Restroom



Note: The Sun Circle Trail in this area is also the Maricopa Trail, which connects Maricopa County Parks together.

For Silent Sunday and other road closures, refer to the City of Phoenix's South Mountain Park web page <https://www.phoenix.gov/parks/trails/locations/south-mountain>

DISCLAIMER: This map is a graphical representation designed for general reference purposes only. Viewer/User agrees to indemnify, defend and hold harmless Maricopa County, its officers, departments, employees and agents from and against any and all suits, actions, legal or administrative proceedings, claims, demands or damages of any kind or nature arising out of the use of this map, or the data contained herein, in its actual or altered form.