







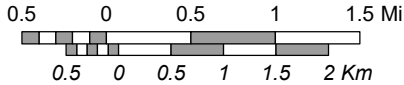
# Maricopa Trail

119<sup>th</sup> Ave - Lake Pleasant

-  Maricopa Trail
-  Trailhead
-  Access Point
-  Junction/Point of Reference
-  Restrooms and Water
-  Other Trails

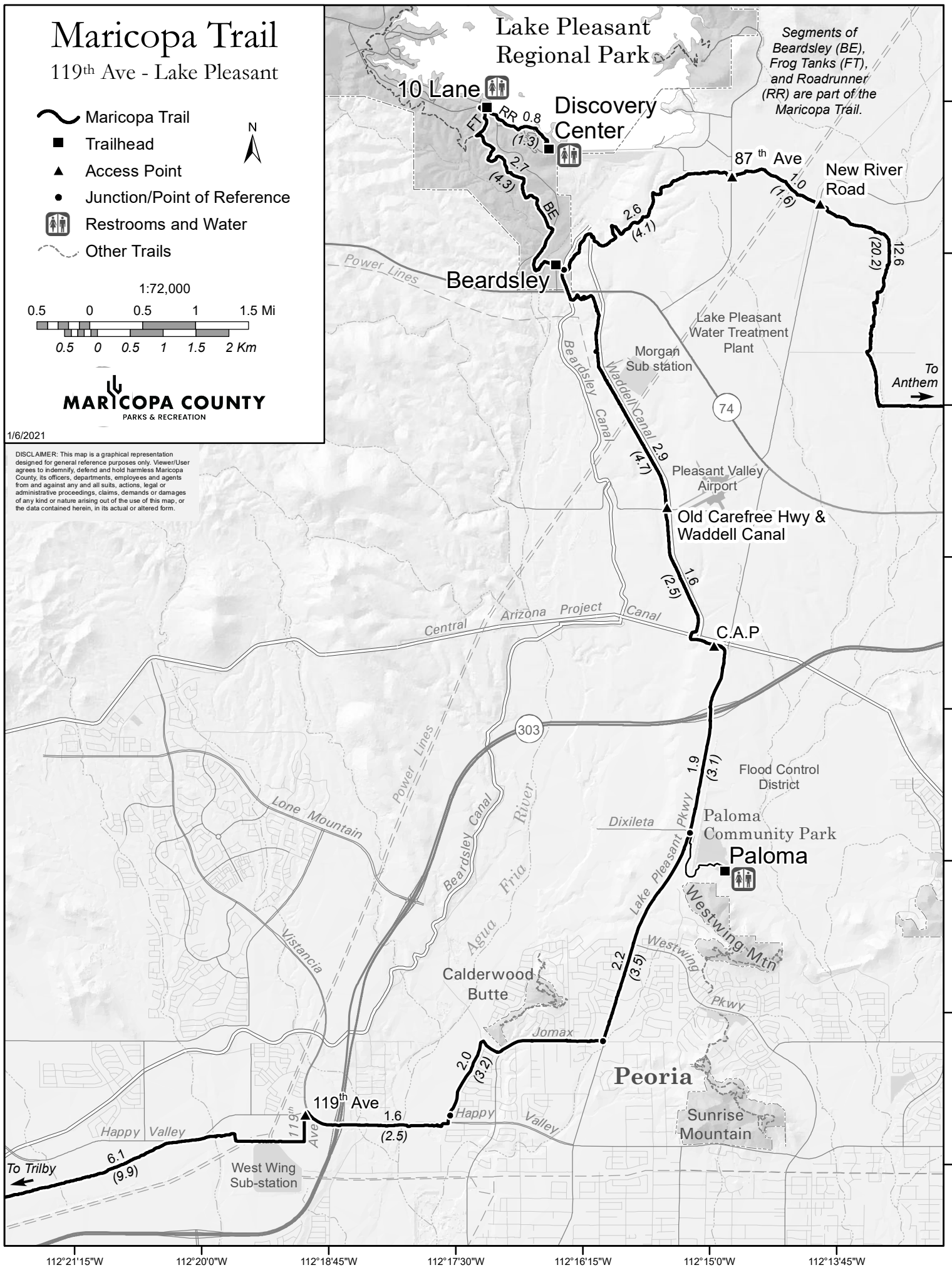


1:72,000



1/6/2021

DISCLAIMER: This map is a graphical representation designed for general reference purposes only. Viewer/User agrees to indemnify, defend and hold harmless Maricopa County, its officers, departments, employees and agents from and against any and all suits, actions, legal or administrative proceedings, claims, demands or damages of any kind or nature arising out of the use of this map, or the data contained herein, in its actual or altered form.



Segments of Beardsley (BE), Frog Tanks (FT), and Roadrunner (RR) are part of the Maricopa Trail.

33°51'15"N  
33°50'00"N  
33°48'45"N  
33°47'30"N  
33°46'15"N  
33°45'00"N  
33°43'45"N  
33°42'30"N

112°21'15"W 112°20'00"W 112°18'45"W 112°17'30"W 112°16'15"W 112°15'00"W 112°13'45"W