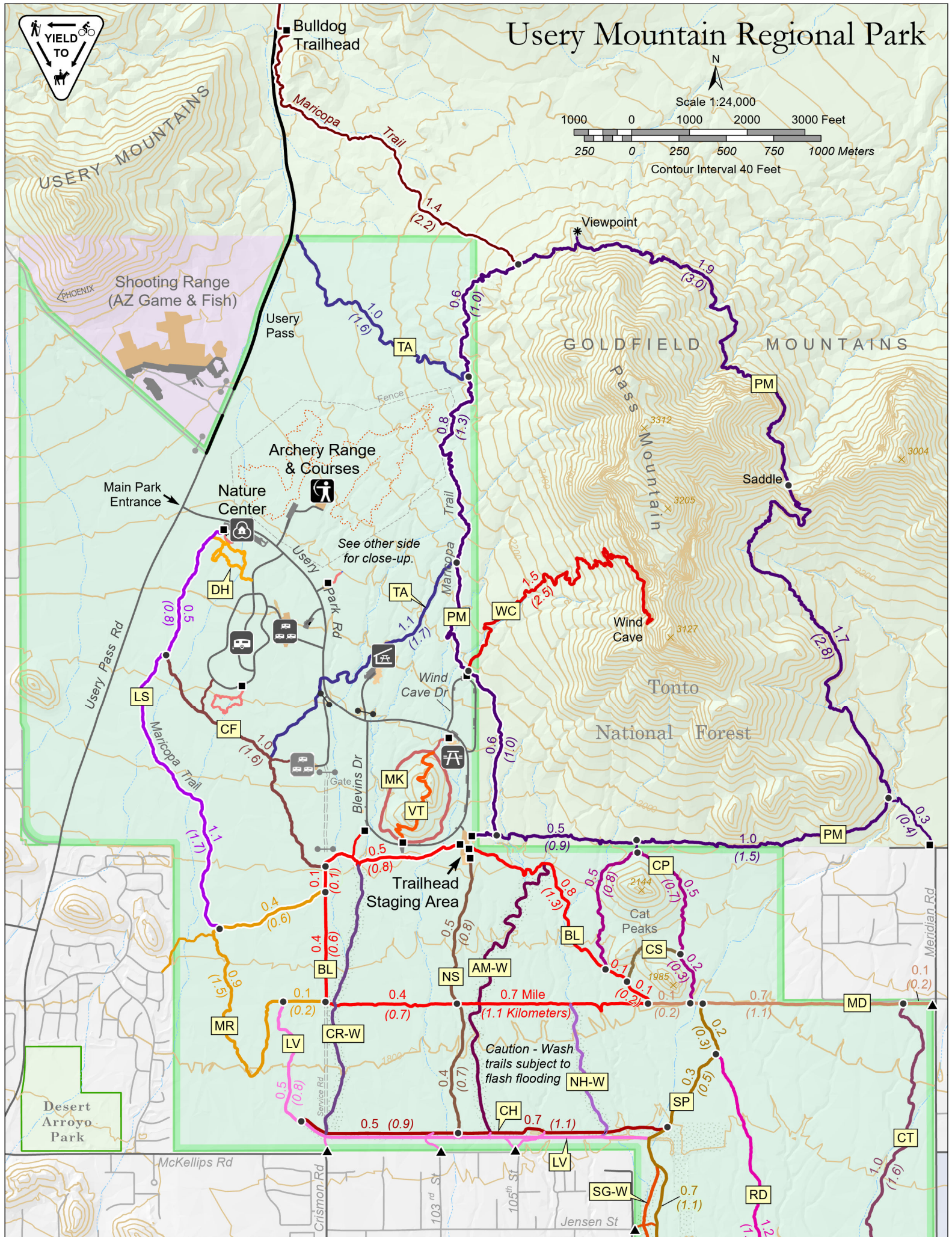
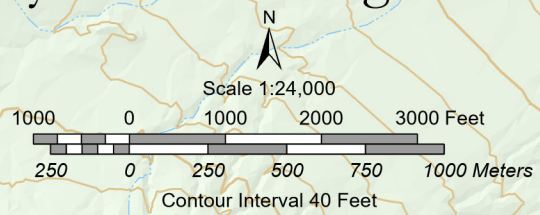


Usery Mountain Regional Park



Trail Code	Trail Name	Length Mi (Km)	Rating Use	Elev Diff Ft M
AM-W	Amigos Wash	1.2 1.9	M	101 31
BL	Blevins	3.0* 4.9*	M	98 30
CP	Cat Peaks	1.1 1.8	M	139 42
CS	Cat Peaks Pass	0.3 0.4	M	66 20
CF	Chain Fruit	1.0 1.6	M	87 27
CH	Channel	1.2 2.0	M	33 10
CT	County Line	1.0 1.6	M	104 32
CR-W	Crismon Wash	0.9 1.5	M	96 29
DH	Desert Hawk	0.5* 0.8*	H	11 3
LV	Levee	1.6 2.6	M	63 19
LS	Lost Sheep	1.6 2.5	M	177 54
MD	Meridian	0.9 1.5	M	43 13
MK	Merkle	0.9* 1.4*	BF	68 21
MR	Moon Rock	1.4 2.3	M	75 23
NH-W	Nighthawk W.	0.5 0.7	M	49 15
NS	Noso	1.0 1.5	M	119 36
PM	Pass Mountain	7.5* 12.0*	M	731 223
RD	Ruidoso	1.3 2.2	M	70 21
TA	Talon	2.1 3.3	M	369 112
SG-W	Signal Wash	0.5 0.8	M	29 9
SP	Spillway	1.2 1.9	M	80 24
VT	Vista	0.5 0.8	H	162 49
WC	Wind Cave	1.5 2.5	H	812 247

- Lengths shown at left are one-way unless indicated by * for loop distance.

- Lengths on map are for selected segments between trail junctions (●), or junction and trailhead.

- Due to rounding, segment lengths on map may not add up to trail totals shown at left.

- Elev Diff is difference in elevation between low and high points, which may or may not match end points of trail. Gross change may be greater.

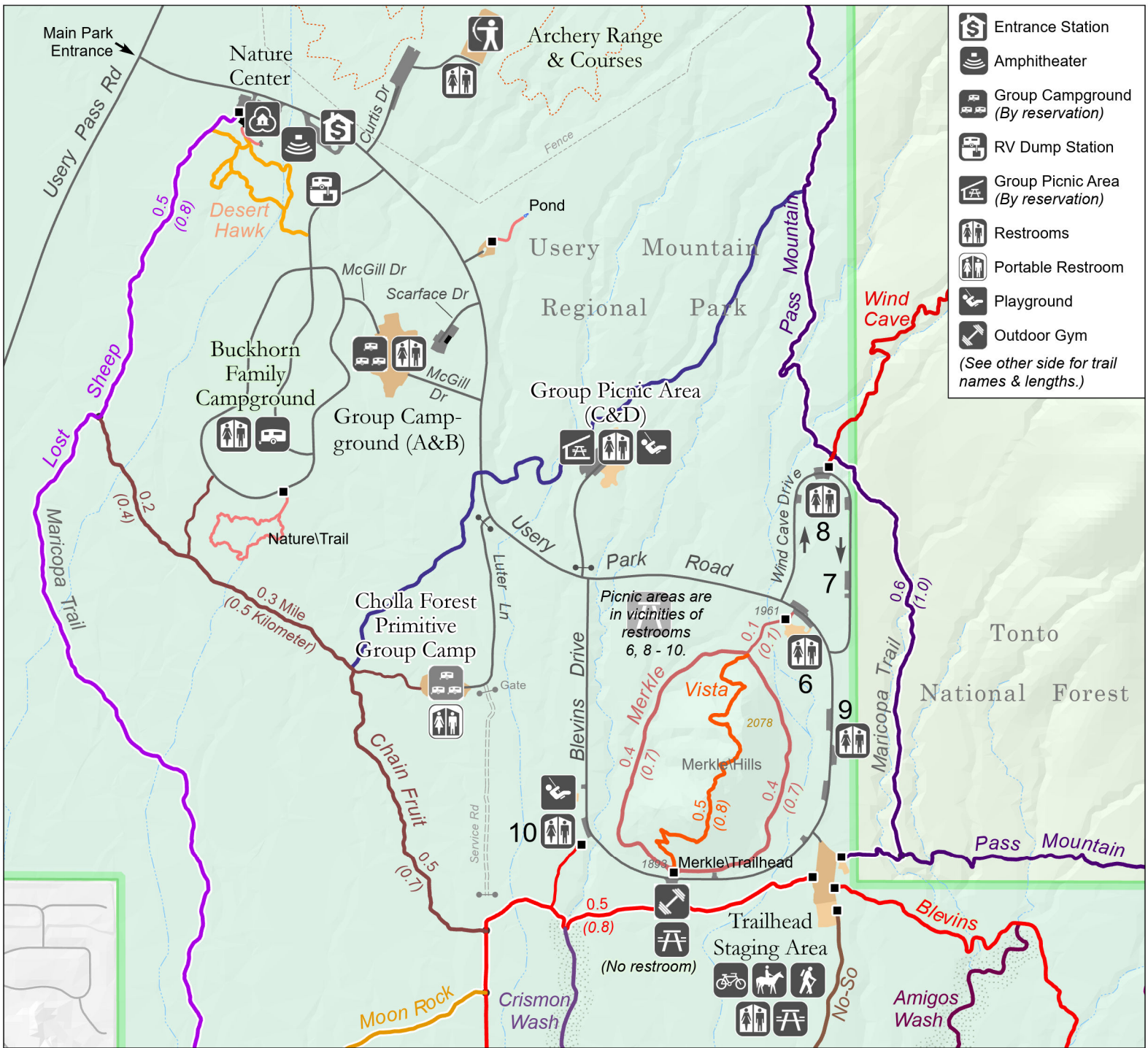
○ Easiest ◇ Moderate - Difficult
 ● Easy ◆ Difficult
 ■ Moderate

M = Multiple Use (all non-motorized access allowed)
 H = Hike Only
 BF = Barrier-free/Interpretive

~ Maricopa Trail*
~ Park Trail*
~ Barrier-free Trail
■ Trailhead
▲ Access Gate
○ Easiest ◇ Moderate - Difficult
● Easy ◆ Difficult
■ Moderate

■ Buckhorn Family Campground
■ Group Campground (A&B) (By reservation)
■ Cholla Forest Primitive Group Camp (By reservation)
■ Group Picnic Area (C&D) (By reservation)
■ Picnic Area

*Trail color varies by name.



Usery Mountain Regional Park

This park encompasses over 3,600 acres. Elevation ranges from 1,700 to 2,750 feet and contains a large variety of plants and animals. Facilities include a 75-unit campground (reservations available) and a group campground (reservations required). The day-use area includes a group picnic area (reservations required) and picnic sites with grills, tables, ramadas and water. Usery Park offers the outdoor enthusiast plenty of outdoor opportunities to enjoy hiking, mountain biking and horseback riding; a trailhead staging area is available with picnic areas and hitching posts.

Park Rules

PLEASE OBSERVE PARK RULES! Park rules are posted throughout the park; they are also available as a handout.

Picnicking

There are 68 **day-use** picnic tables with barbecues. Many of the tables are under shade ramadas. These areas are available on a first-come, first-served basis.

The **Group Picnic Area** has four ramadas (C1, C2, D1, D2). Reservations required including fees. Each ramada is equipped with electricity, water, shaded tables, a large patio, fire pit, a large barbecue, and floodlights. For reservations: (602) 506-2930.

Camping

Usery Mountain Regional Park offers family camping and group camping areas, for a fee. The **Buckhorn Family Campground** has 75 camping sites for tent or RV camping plus a common dump site. Each site has a large parking area to accommodate up to a 45-foot RV, water and electrical hook-ups, a picnic table, barbecue grill and fire ring. The restrooms offer flush toilets and hot water showers. There is a 14-day stay limit in each site. Reservations available: <http://www.maricopacountyparks.org> or (602) 506-2930.

There are two **Group Campgrounds** labeled A and B. Reservations are required including fees. Each area has one large ramada containing six tables and a large patio. There are no hookups for RVs. Both areas share restrooms; showers are also available. Primitive and youth group campgrounds available; reservations required. For reservations: (602) 506-2930.

Trails

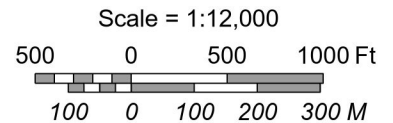
The **Trailhead Staging Area**, open to all trail users, has hitch rails, tables, portable toilets, and a large lot to accommodate horse trailers. Smaller trailheads are in the vicinities of the picnic areas.

Usery Mountain Regional Park offers some 32 miles of **trails**. Park trails range in length from 1 mile (round-trip) to 7.4 miles and range in difficulty from easy to strenuous. Merkle Trail is a 1-mile (round-trip), **barrier-free** trail around a small mountain. The flatland trails are good for an easy hike. A good workout can be found on the Wind Cave Trail or Pass Mountain Trail.

Note: Travel can be arduous if you are not prepared. Always carry plenty of water, use protection from the sun, and let someone know your route. Please enter the Maricopa County Sheriff's Office phone number (602) 876-1011 into your cell phone, for use in case of emergency.

Archery

The **Archery Range** is Arizona's premier outdoor facility and one of the only Five-Star-rated range in the Western United States. Amenities include 4 miles of walking trails, a shaded shooting area, restroom facilities, and picnic areas. A separate map is available.



Ranger-Led Programs

Ranger-led hikes and programs are offered year-round. These nature-based programs are a great way to gain knowledge and appreciation of this unique desert. Programs are on the website or at the Entry Station or Nature Center. Most are free with daily vehicle fee or a park annual pass.

Annual Park Pass

Annual passes are available for entrance into Usery Mountain Regional Park, and all Maricopa County mountain parks.

General Information

Park hours vary by season and gates close nightly. A per-vehicle entry fee is required. Please use the self-pay station when the entrance booth is not staffed. For further information please contact the Park Office.

Mailing Address:
Usery Mountain Regional Park
3939 N. Usery Pass Road
Mesa, AZ 85207

Telephone: (602) 506-2930 #4
E-mail: MaricopaCountyParks@maricopa.gov



Interactive Trail Map



DISCLAIMER: This map is a graphical representation designed for general reference purposes only. Viewer/ User agrees to indemnify, defend and hold harmless Maricopa County, its officers, departments, employees and agents from and against any and all suits, actions, legal or administrative proceedings, claims, demands or damages of any kind or nature arising out of the use of this map, or the data contained herein, in its actual or altered form.

