

METALMARKS

FATAL CALEPHELIS

Calephelis nemesis

Food: Seep willow

Wingspan: 0.9 - 1 inch



MORMON METALMARK

Apodemia mormo autumnalis

Food: Buckwheats include flattop

Wingspan: 1.2 inches



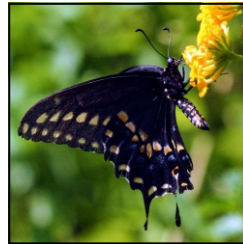
SWALLOWTAILS

DESERT (BLACK) SWALLOWTAIL

Papilio polyxenes coloro

Food: Turpentine broom

Wingspan: 2.5 - 2.75 inches



TWO-TAILED TIGER SWALLOWTAIL

Papilio multicaudata

Food: Sycamore, hoptree, ash and cherries

Wingspan: 2.34 - 5.25 inches



PIPEVINE SWALLOWTAIL

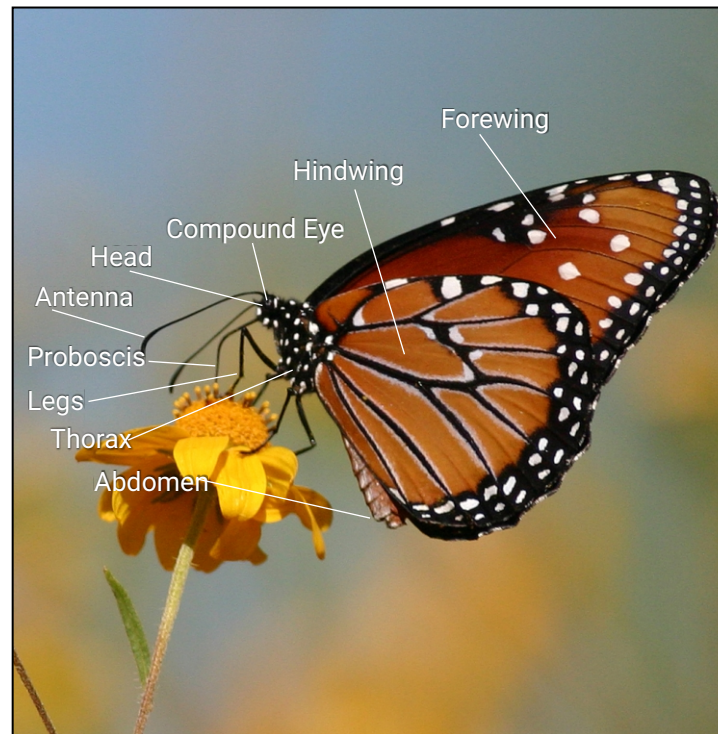
Battus philenor

Food: Pipevine

Wingspan: 2.5 - 4.5 inches



ANATOMY



NOTES

CREDIT

A special thank you to the following individuals and agencies for providing assistance with the butterfly brochure data and for allowing the department to use their photos in this brochure.

- Marceline VandeWater
- Ronald Rutowski
- Phillip McNally

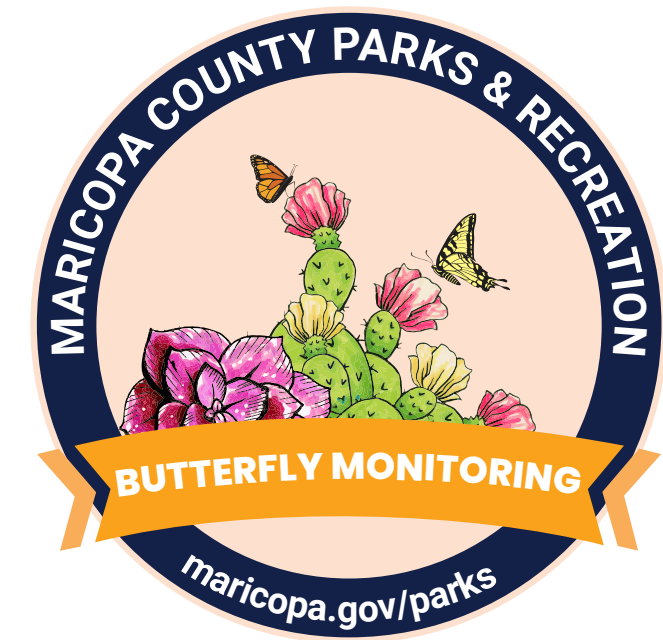
This brochure brought to you by:



azmnmcp.org



BUTTERFLIES BRUSHFOOT, METALMARK AND SWALLOWTAIL SERIES



BRUSHFOOT

AMERICAN LADY

Vanessa virginiensis

Food: Cudweeds and thistles

Wingspan: 1.5 - 2.25 inches



AMERICAN SNOOT

Libytheana carinenta

Food: Hackberry

Wingspan: 1.25

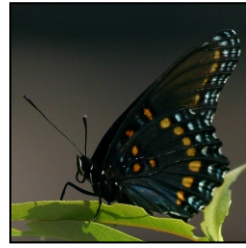


ARIZONA RED-SPOTTED PURPLE

Limenitis arthemis arizonensis

Food: Willows, aspens, poplar and cottonwoods and chokecherry

Wingspan: 2.5 - 3.2 inches



ARIZONA SISTER

Adelpha eulalia

Food: Oaks: Gambels, scrub, emory and white

Wingspan: 2.25 - 3 inches



CALIFORNIA PATCH

Chlosyne californica

Food: Sunflowers and goldeneye

Wingspan: 1.5 inches



BRUSHFOOT

PAINTED LADY

Vanessa cardui

Food: Fiddleneck, Asters, Borages and Mallows

Wingspan: 1.5 - 2.25 inches



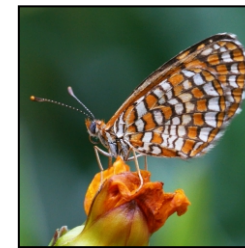
ELADA CHECKERSPOT

Texola elada

Food: Acanthus family

Wingspan: 1 inch

Note: A similar species, the Arizona Metalmark, occurs locally



EMPRESS LEILIA

Asterocampa leilia

Food: Desert hackberry

Wingspan: 1.5 - 2 inches



GRAY BUCKEYE

Junonia grisea

Food: Variety of figworts, penstemons, paint brushes, veronicas, and monkeyflowers

Wingspan: up to 2.5 inches



GULF FRITILLARY

Agraulis vanillae incarnata

Food: Passion vine

Wingspan: 3 - 3.25 inches



BRUSHFOOT

MONARCH

Danaus plexippus

Food: Milkweeds

Wingspan: 3 - 4.5 inches

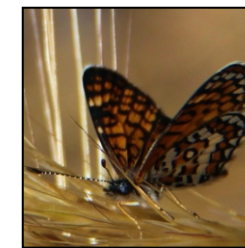


TINY CHECKERSPOT

Dymasia dymas chara

Food: Chuparosa and species within Acanthus family

Wingspan: 1 inch



MOURNING CLOAK

Nymphalis antiopa

Food: Willows, cottonwoods, birch and hackberry.

Wingspan: 2.75 - 3.25 inches

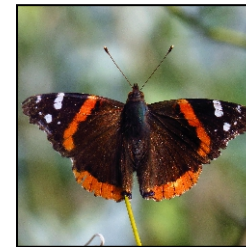


RED ADMIRAL

Vanessa atalanta rubria

Food: Nettles

Wingspan: 1.5 - 2.25 inches

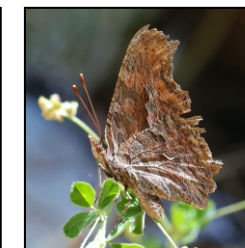


SATYR ANGLEWING

Polygonia satyrus

Food: Nettles and willows

Wingspan: 1.75 inches



BRUSHFOOT

QUEEN

Danaus gilippus thersippus

Food: Milkweeds

Wingspan: 2.8 - 3.5 inches



VICEROY

Limenitis archippus obsoleta

Food: Willows and cottonwoods

Wingspan: 2.5 - 2.75 inches



CHALCEDON (VARIABLE) CHECKERSPOT

Euphydras chalcedona

Food: Penstemon, Caparral Beard Tongue, and other plantains

Wingspan: 1.6 - 1.75 inches



VARIEGATED FRITILLARY

Euptoieta claudia

Food: Violets, Passion Vines, and other plants

Wingspan: 1.75 - 3.1 inches



WEST COAST LADY

Vanessa annabella

Food: Mallows

Wingspan: 1.5 - 2 inches

