

"PARKS VISION 2030"

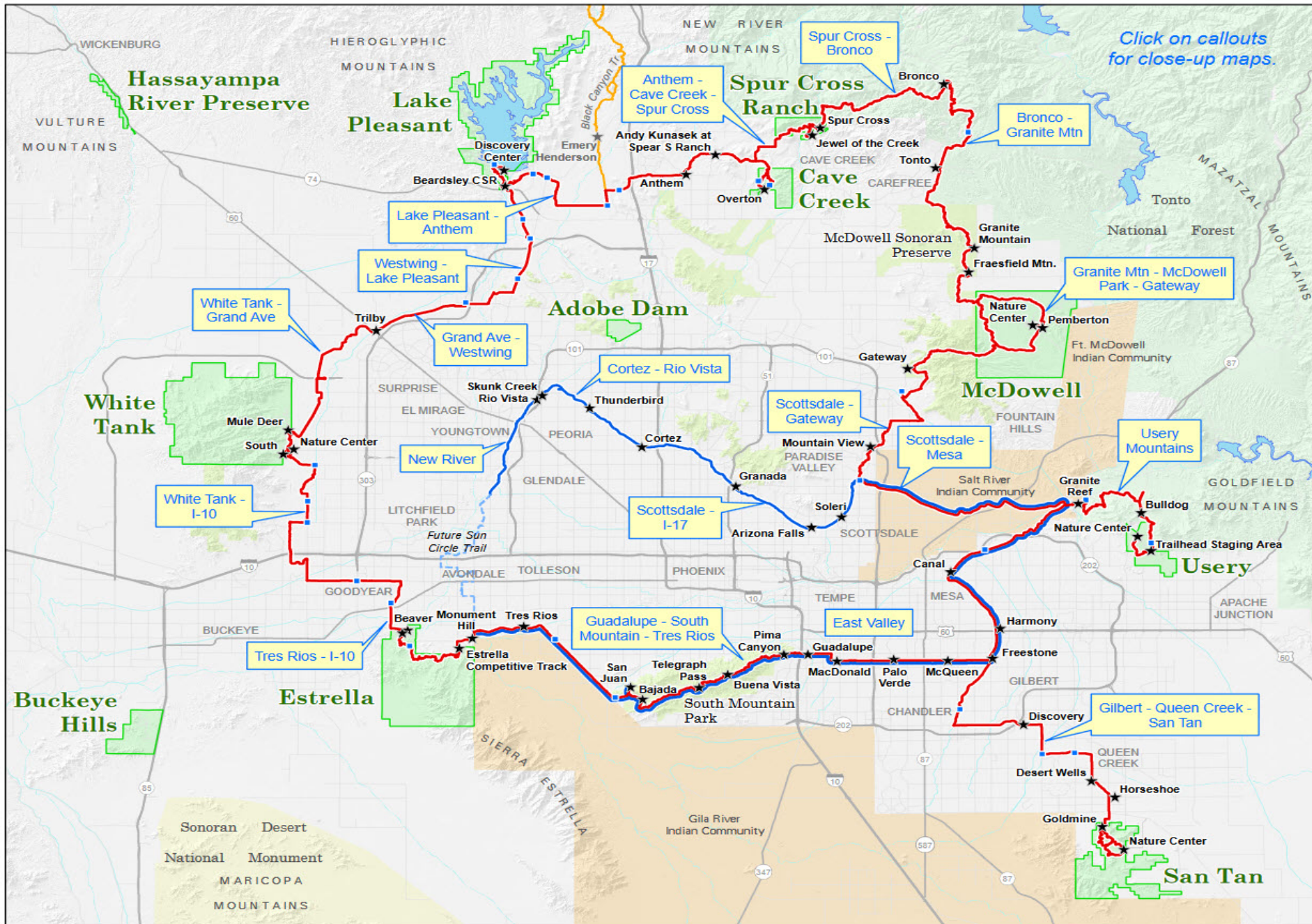
PARKS, OPEN SPACE, AND TRAILS SYSTEM PLAN

Continuing the Legacy



Maricopa County
Parks and Recreation Department
www.maricopacountyparks.net

Maricopa Trail and Sun Circle Trail



Click on callouts for close-up maps.

Regional Trail System

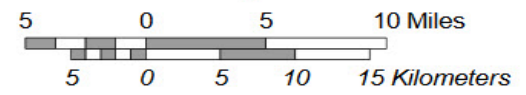
- Maricopa Trail
- Sun Circle Trail
- Trailhead
- Access Point

Note: The southern part of the Sun Circle Trail overlaps with the Maricopa Trail.

- Regional Park/Preserve
- Mountain Preserve



1:400,000



Maricopa County
Parks and Recreation Department

DISCLAIMER: This map is a graphical representation designed for general reference purposes only. Viewer/User agrees to indemnify, defend and hold harmless Maricopa County, its officers, departments, employees and agents from and against any and all suits, actions, legal or administrative proceedings, claims, demands or damages of any kind or nature arising out of the use of this map, or the data contained herein, in its actual or altered form.

2009 PARK SYSTEM MASTER PLAN



- **Outlined** the park system, system-wide key issues, and recommendations
- **Discussed** community needs, demographics, and drive-time analysis
- **Analyzed** park programs, operations, maintenance, and administration/finances
- **Reviewed** benchmark plans, relevant policies, legislation, training, and certifications
- **Full assessment** performed on park land and facilities
- 10-year **Capital Improvement Plan** outlined
- **Implementation** strategies were defined

THE LEGACY

- **1957 – 500 Volunteers** produce an assessment of County-wide park and recreation needs
- **February 25, 1963 Board of Supervisors Resolution** establishes the regional park system through deeds and Federal leased
- **December 1, 1965 Board of Supervisors** adopt the first Maricopa County Regional Parks System Plan

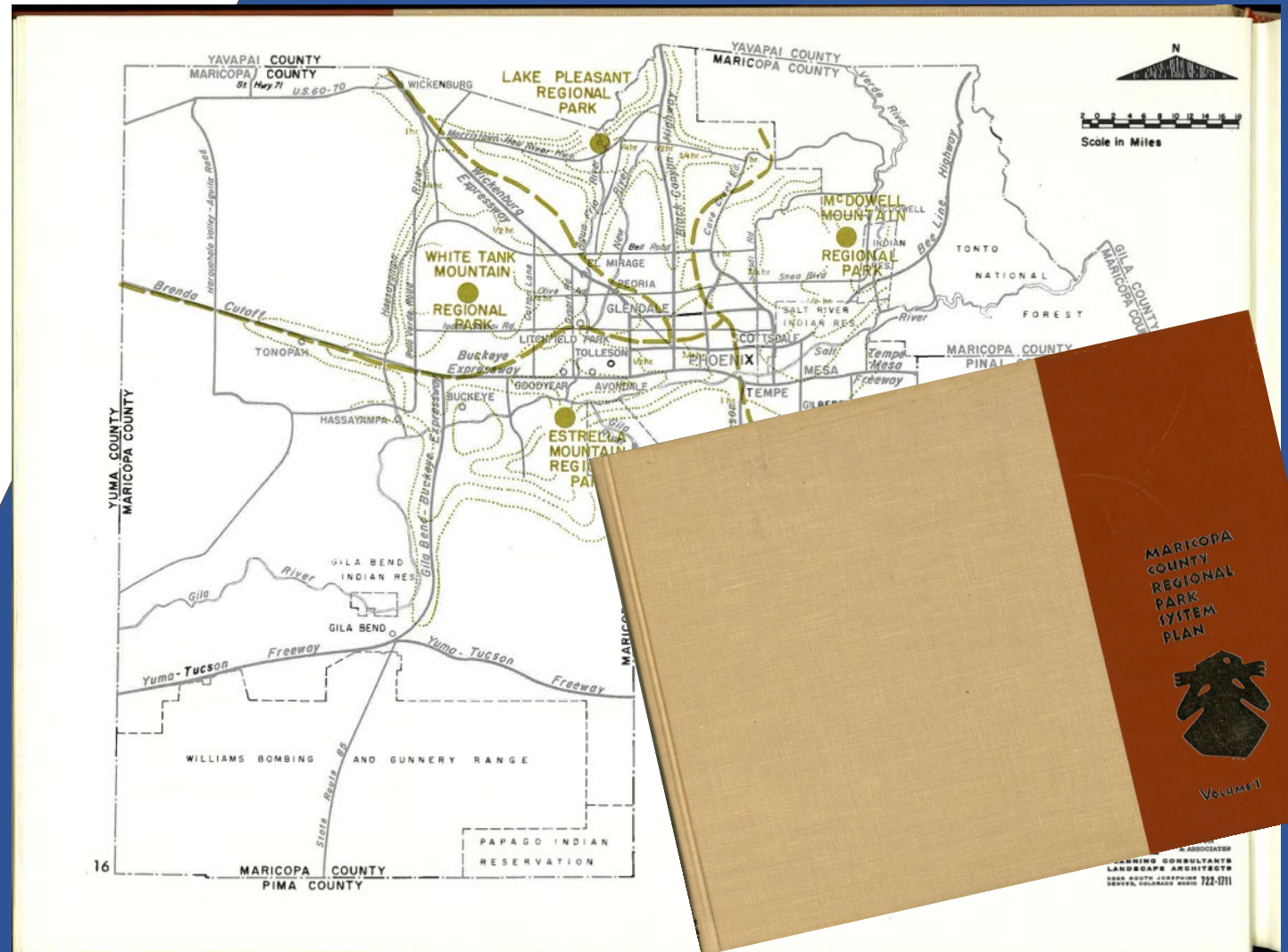


PARK SYSTEM PURPOSE AND NEED

- Clear and detailed scientific background for planning future parks
- Reflect needs and desires of the citizens
- Establish standards for the entire park system
- Prepare Master Plans for individual parks
- Analyze long range effects of the parks from a sociological and economic point of view

Maricopa County Regional Park System Plan

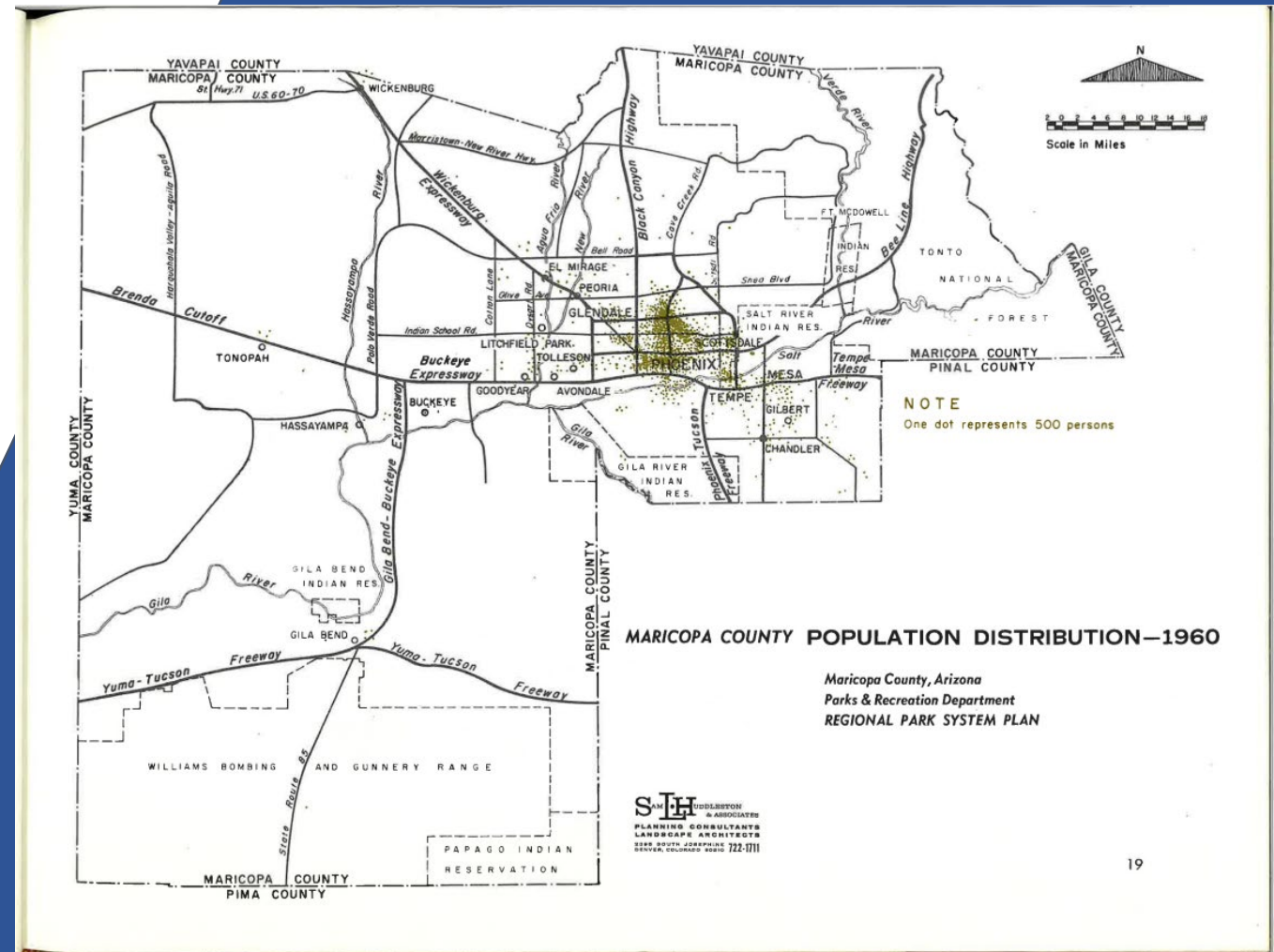
Volume One, 1965

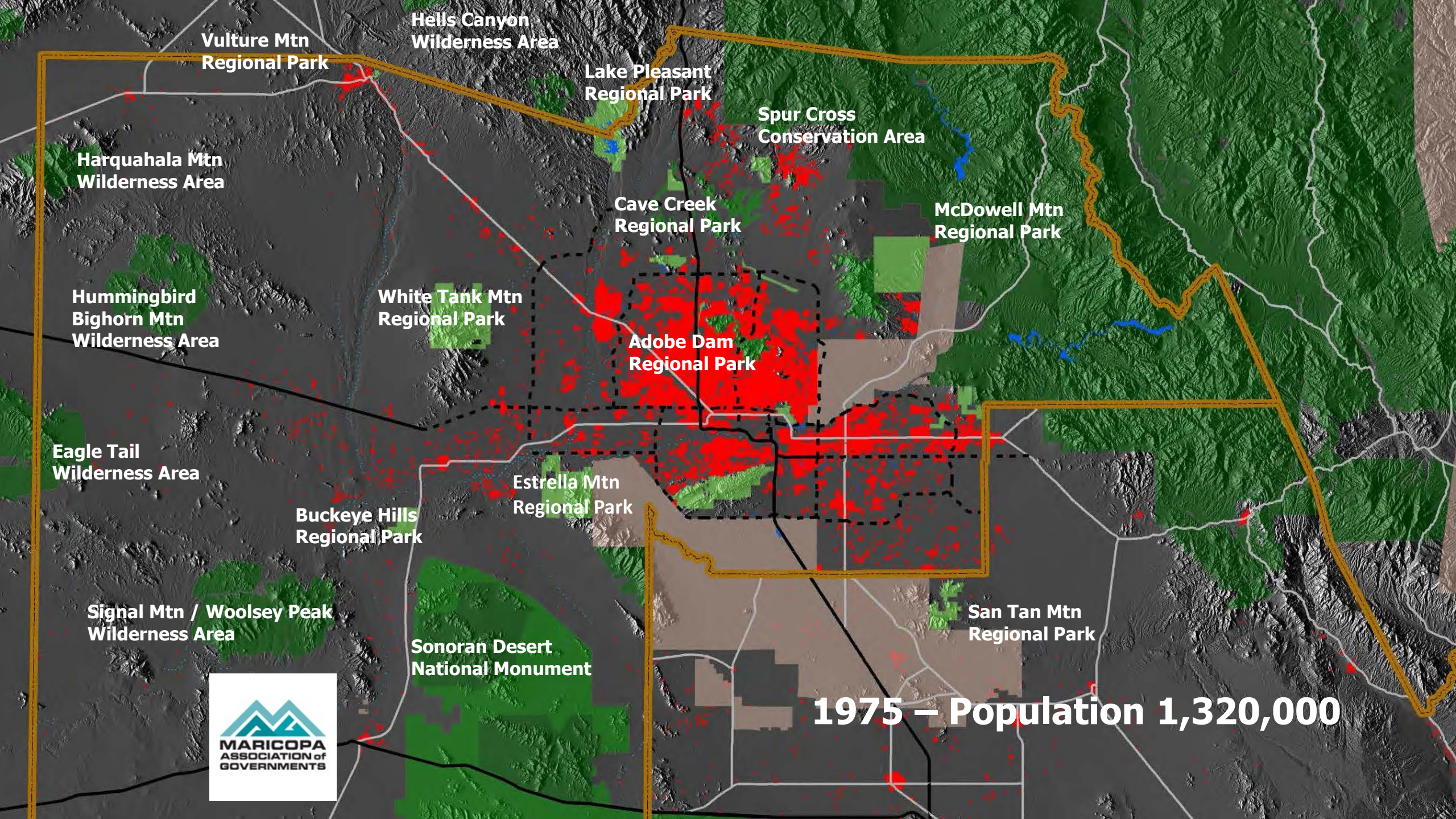


PARK SYSTEM RESPONSE TO GROWTH

- Projected growth from **1960** to **1980** from **664,000** to **1,440,000**
- Time-distance to recreational facilities is a major factor in citizen engagement
- Motivation to participate is the quality of the recreational experience
- Opportunities and limitations to participate relate to age, income, leisure time

*Maricopa County Regional Park System Plan
Volume One, 1965*





Vulture Mtn
Regional Park

Hells Canyon
Wilderness Area

Lake Pleasant
Regional Park

Spur Cross
Conservation Area

Harquahala Mtn
Wilderness Area

Cave Creek
Regional Park

McDowell Mtn
Regional Park

Hummingbird
Bighorn Mtn
Wilderness Area

White Tank Mtn
Regional Park

Adobe Dam
Regional Park

Eagle Tail
Wilderness Area

Buckeye Hills
Regional Park

Estrella Mtn
Regional Park

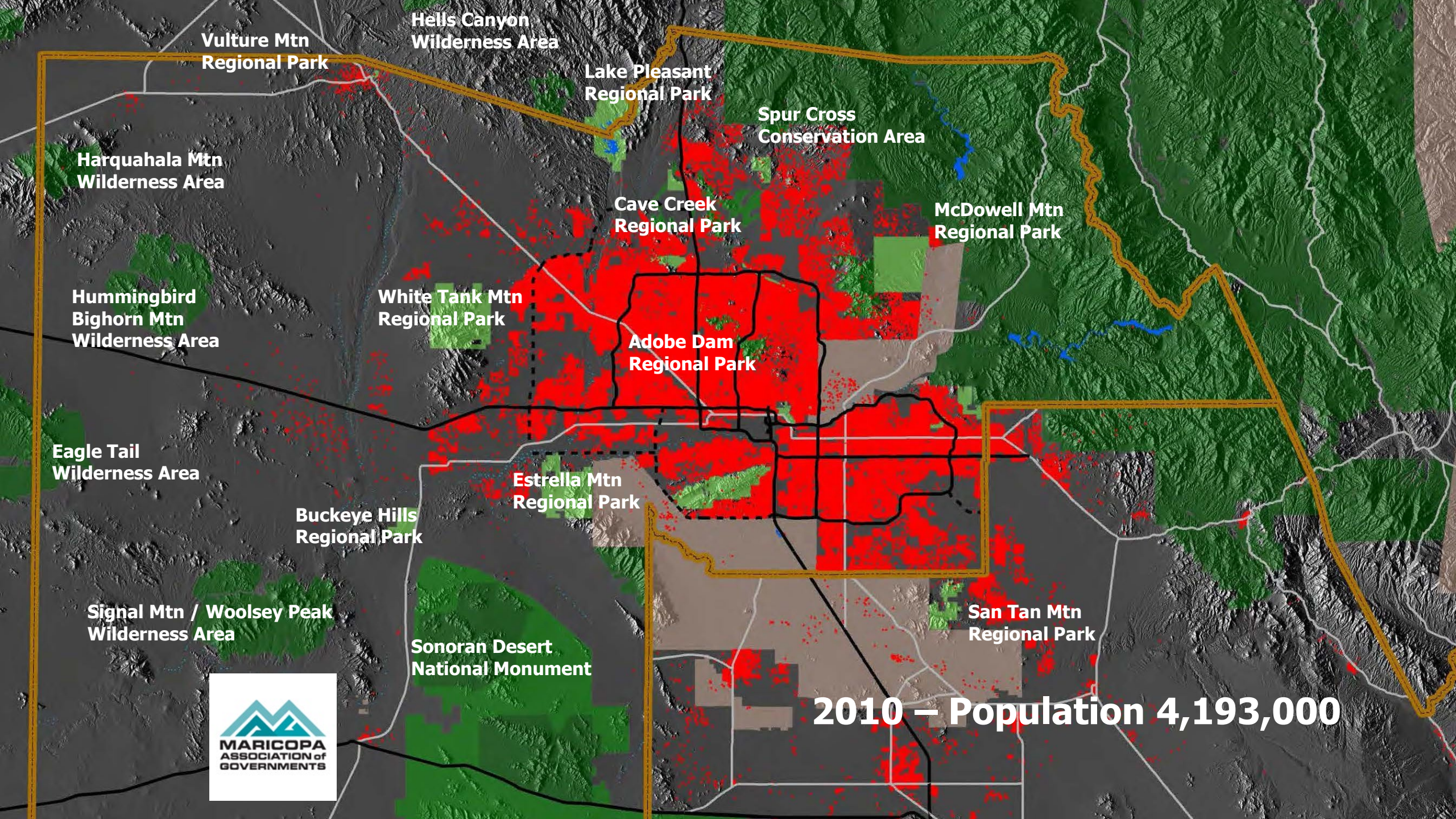
Signal Mtn / Woolsey Peak
Wilderness Area

Sonoran Desert
National Monument

San Tan Mtn
Regional Park



1975 – Population 1,320,000



Vulture Mtn
Regional Park

Hells Canyon
Wilderness Area

Lake Pleasant
Regional Park

Spur Cross
Conservation Area

Harquahala Mtn
Wilderness Area

Cave Creek
Regional Park

McDowell Mtn
Regional Park

Hummingbird
Bighorn Mtn
Wilderness Area

White Tank Mtn
Regional Park

Adobe Dam
Regional Park

Eagle Tail
Wilderness Area

Estrella Mtn
Regional Park

Buckeye Hills
Regional Park

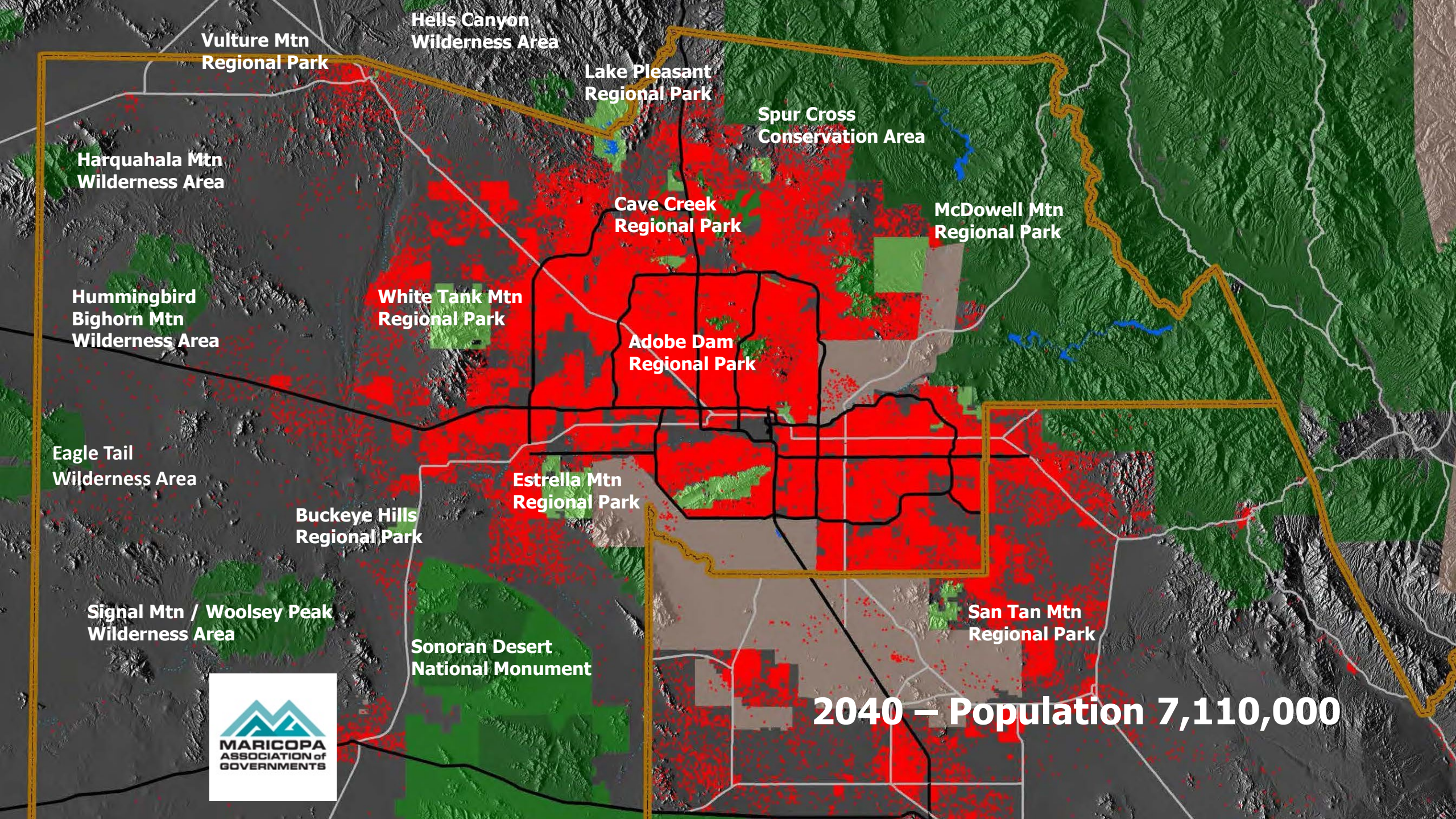
Signal Mtn / Woolsey Peak
Wilderness Area

Sonoran Desert
National Monument

San Tan Mtn
Regional Park



2010 – Population 4,193,000



Vulture Mtn
Regional Park

Hells Canyon
Wilderness Area

Lake Pleasant
Regional Park

Spur Cross
Conservation Area

Harquahala Mtn
Wilderness Area

Cave Creek
Regional Park

McDowell Mtn
Regional Park

Hummingbird
Bighorn Mtn
Wilderness Area

White Tank Mtn
Regional Park

Adobe Dam
Regional Park

Eagle Tail
Wilderness Area

Buckeye Hills
Regional Park

Estrella Mtn
Regional Park

Signal Mtn / Woolsey Peak
Wilderness Area

Sonoran Desert
National Monument

San Tan Mtn
Regional Park

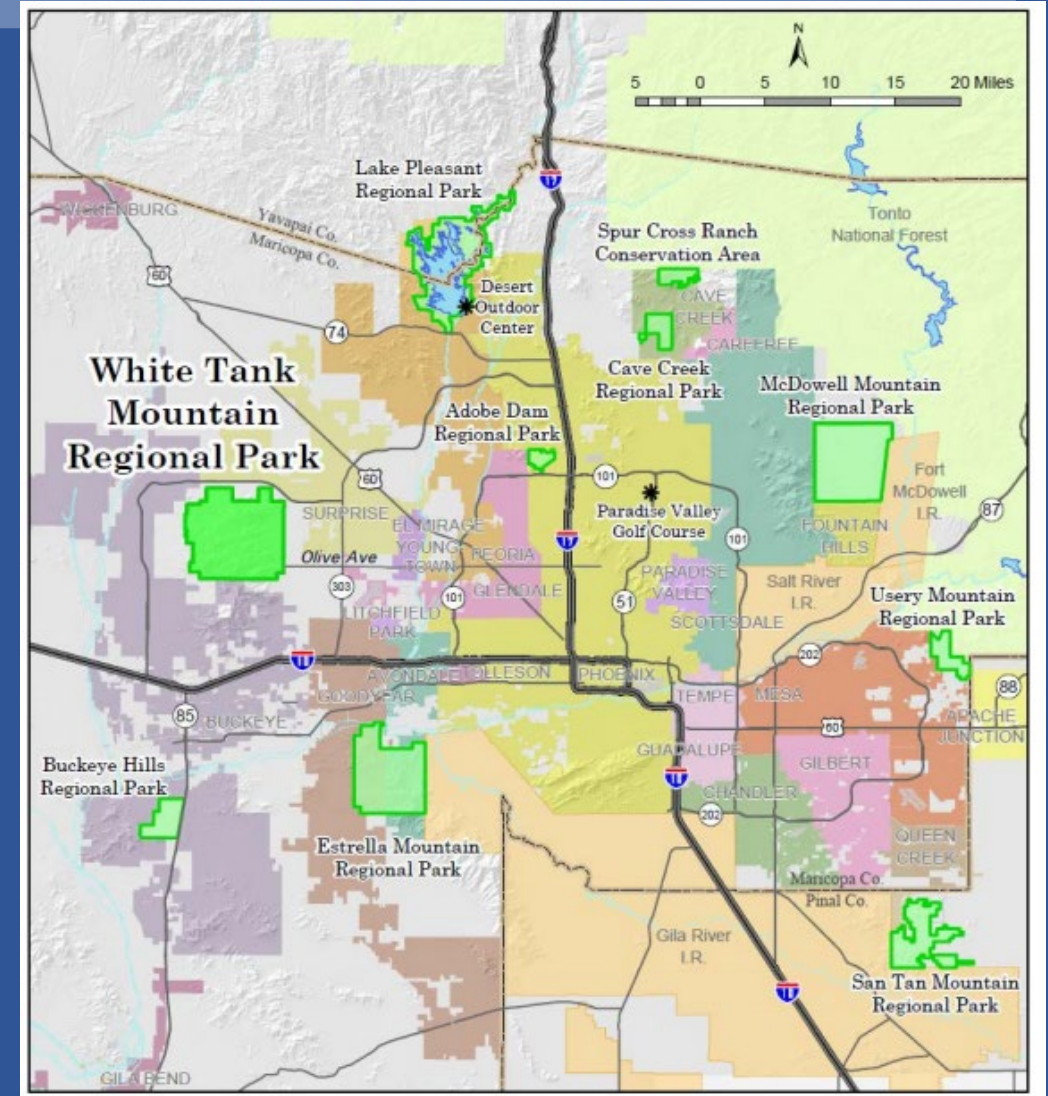
2040 – Population 7,110,000



STRATEGIC SYSTEM PLAN VS. PARK MASTER PLANS

STRATEGIC SYSTEM PLAN

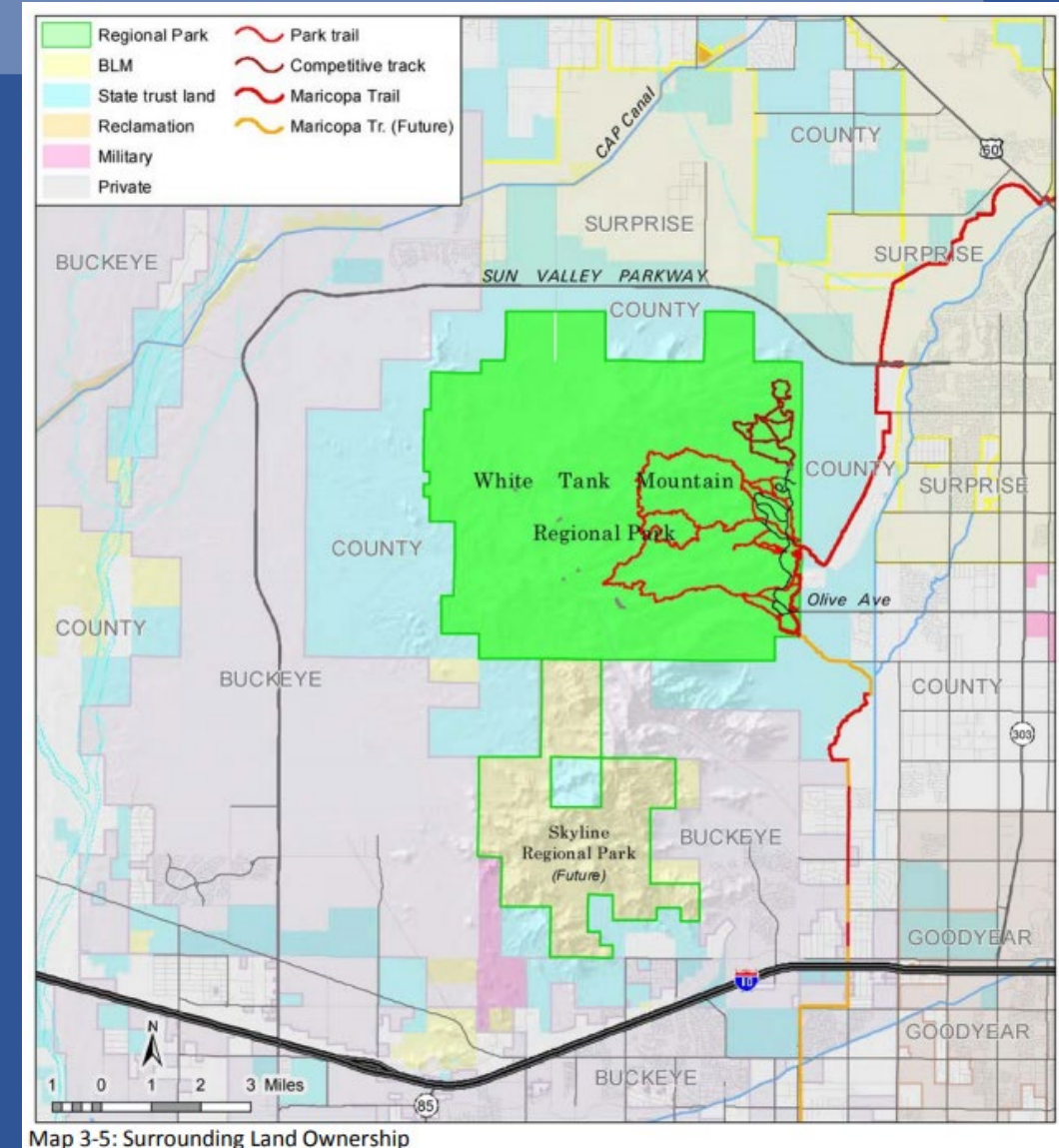
- Strategic Plan focus is on the larger park system with a 10 and 50 year horizon
- Addresses development pressure that may impact the park sustainability
- Identify growth of the park system through existing park land acquisition or new parklands
- Identify opportunities for greater visitor access
- Identifies and plans for economic impact in the New Economy
- Address regional scale conservation measures to sustain a system of connected landscapes - "Continue the Legacy"



STRATEGIC SYSTEM PLAN VS. PARK MASTER PLANS

PARK MASTER PLANS

- Park Master Plans focus on how to meet the needs of their region over a 10-year period
- Make adjustments to the park management to sustain environmental quality and visitor experience
- Addresses localized growth and encroachment
- Consistently assesses the quality of visitor experiences and planned improvements
- Identifies and commits financial resources on an annual basis



WHAT WE KNOW

- Parks are an “Essential Service”!
- 98% of Arizona’s residents say “parks, preserves, forests and open spaces” are important to them.
- Protecting air, water land and wildlife are among Arizonan's top three priorities for future action.
- 59% of Arizona residents participate in outdoor recreation each year.
- Maricopa County Park visitors rank their Satisfaction with Parks as "Extremely High".
- Maricopa County Park visitors report "Observing the Scenic Beauty" as the #1 Reason for Visiting a Park.
- Maricopa County is the fastest growing county in the U.S. for the last four years.
- By 2040 the County's population could top 7 million and 2 million acres of development will be needed to support the new population.
- More than 75% of Maricopa County Park visitors agree or strongly agree more regional parks are needed.
- Outdoor Recreation is among the State's largest economic sectors with annual spending exceeding \$21 Billion.
- For every dollar invested in Maricopa County Parks, the regional economic benefit is \$4.85.



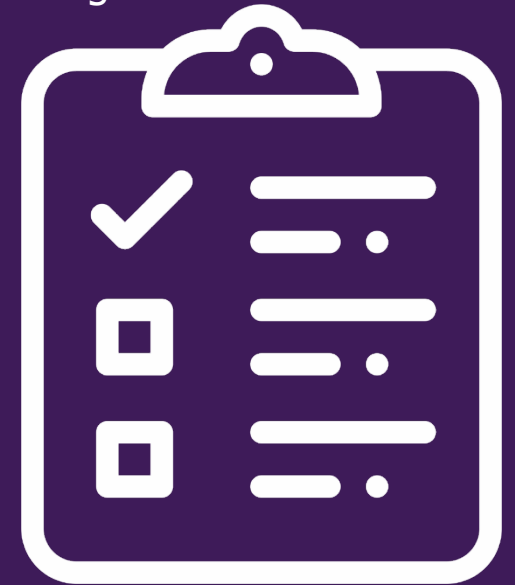
RELEVANT PLAN ELEMENTS

OPEN SPACE OVERVIEW

- Two important factors that determine the appeal of an area are the **amount** and **quality** of open spaces for people to enjoy
- State law requires that the county **identify** existing open spaces, **forecast** future open space needs, identify strategies to **preserve** and **acquire** open space as necessary, and **integrate** open space on a regional basis
- Vision 2030 **supports** the county's Parks and Recreation Strategic System Master Plan, Regional Trail System Plan, and considers open space and connectivity a fundamental part of future development

OPEN SPACE GOALS

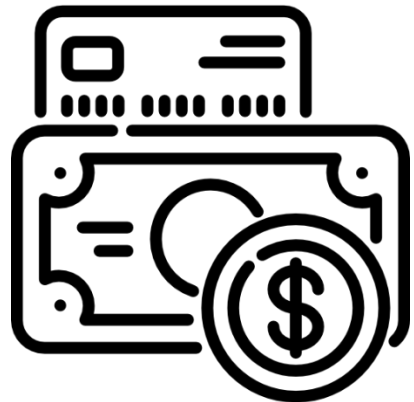
- Provide **regional leadership** to promote environmental quality, including the preservation of open, natural park and recreation lands
- **Protect** and **expand** the regional park system proportionately with population growth
- **Build** the Maricopa Trail and the Maricopa County Regional Trail System
- **Work** with municipalities to connect the trail system to their park and preserve systems



RELEVANT PLAN ELEMENTS

ECONOMIC GROWTH OVERVIEW

The global economy means business, industry, and the workforce are more mobile than ever and it is important to recognize that other places in the U.S. and around the world have advantages and characteristics that rival those of Maricopa County



ECONOMIC GROWTH GOAL

- **Contribute** to an effective regional economy
- Have a **diverse** and **balanced** economy to promote long-term economic stability and economic resiliency
- **Attract** a variety of industries from basic sector clusters and the workers needed to compete in the **New Economy**
 - In the New Economy, **Quality of Place** matters when attracting and retaining employers and employees. This includes:
 - Condition of the natural and built environment
 - Variety of open space, recreation, trails, and leisure opportunities
 - A sense of place, acceptance, and belonging

PLAN ELEMENTS

Balancing People and Place

PEOPLE

PLACE



PLAN ELEMENTS - *Balancing People and Place*



COMMUNITY HEALTH AND WELL-BEING: Parks, open spaces, and trails offer vast opportunities to improve the health and well-being of our citizens. By connecting people with nature, we can renew the spirit, improve physical and emotional health, and strengthen our communities.



QUALITY OF LIFE, AND THE NEW ECONOMY: Providing quality places matter to our citizens and the economy by attracting and retaining knowledge-based employees and employers and providing opportunities for expanded tourism.



EXCEPTIONAL VISITOR EXPERIENCES
Creating memorable visitor experiences through well designed facilities, friendly customer service and engaging programming is critical in developing life-long users of our natural spaces



PRESERVING REGIONAL NATURAL HERITAGE: We know residents place a high value on our Sonoran Desert heritage. Protecting quality outdoor spaces for future enjoyment and the many other important benefits such as flood control and heat mitigation is critical amidst rapid population growth.



SUSTAINING AND MAINTAINING PARK RESOURCES: Maintaining, improving and restoring existing parks and natural resources allows visitors to have a quality experience, protects our investments from deterioration and costly future repairs, and increases carrying capacity.



CONNECTED LANDSCAPES AND TRAILS: Connectivity through natural and trail corridors allow wildlife and people to move between larger landscape blocks, which greatly enhance the ecological viability of the open space system and connects our communities with regional park and other venues.

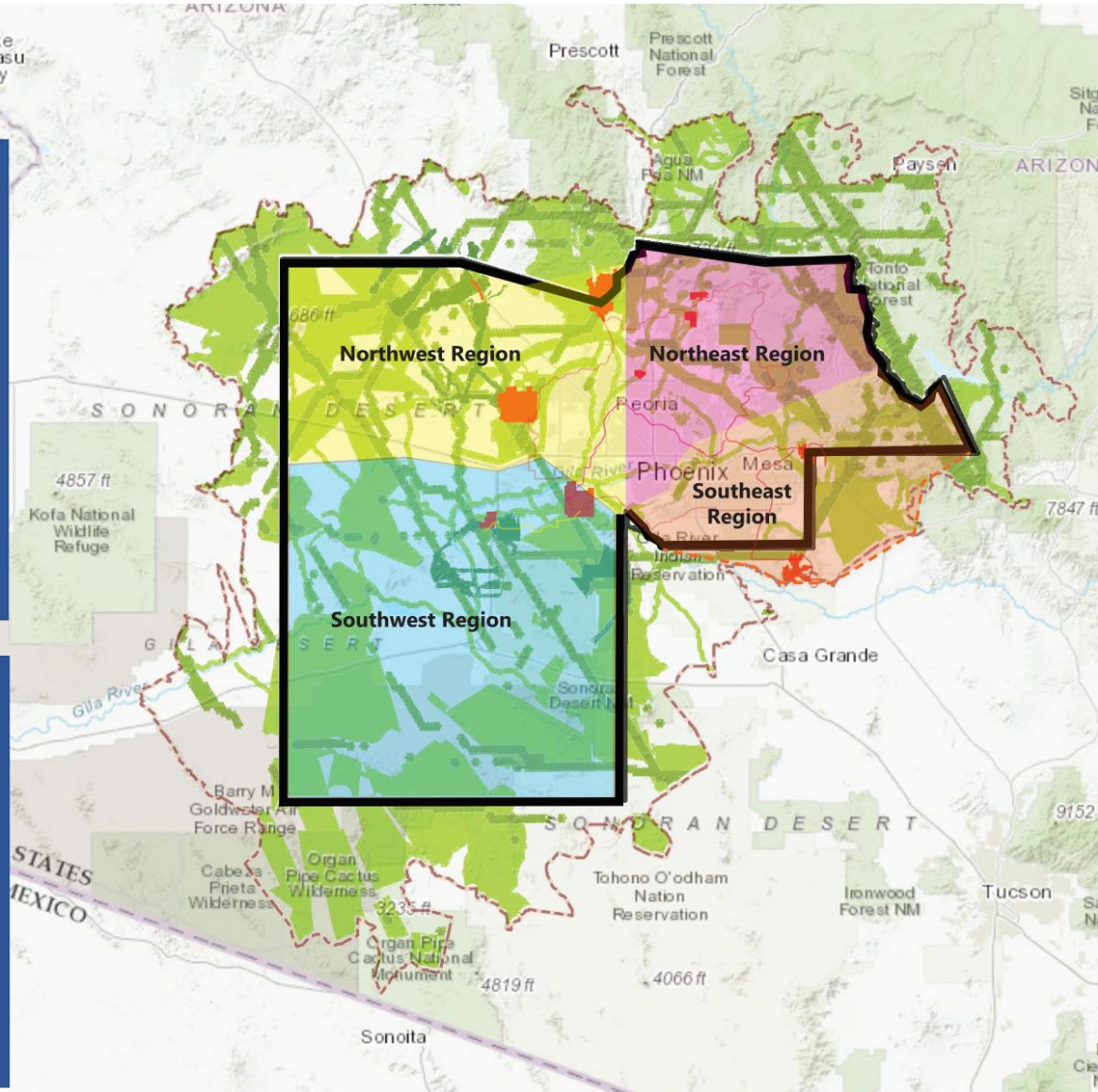
FOCUS GROUPS BY REGION

North West Region

Cities	Agencies/Org.
Wickenburg	White Tank Mtn
Surprise	Conservancy
Peoria	BLM
Glendale	USFS
El Mirage	BOR
Youngtown	CAP
Buckeye	AGFD
	State Land

South West Region

Cities	Agencies/Org.
Buckeye	Gila River Indian
Goodyear	Community
Avondale	Tohono O'odham
Litchfield Park	Nation
Gila Bend	NPS
Tolleson	BLM
	AGFD
	State Land



North East Region

Cities	Agencies/Org.
Phoenix	Ft McDowell
Carefree	Indian Community
Cave Creek	Salt River Indian
Fountain Hills	Community
Scottsdale	Yavapai County
Guadalupe	McDowell Sonoran
Paradise Valley	Conservancy
	USFS
	NPS
	BOR
	CAP
	SRP
	AGFD
	State Land

South East Region

Cities	Agencies/Org.
Phoenix	Ft McDowell
Mesa	Indian
Gilbert	Community
Queen Creek	Pinal County
Apache Junction	Gila River Indian
Tempe	Community
Chandler	USFS
	BOR
	CAP
	SRP
	AGFD
	State Land

FOCUS GROUP INPUT

- Opportunities for the regional parks to “fit in” to city and Federal plans
- Identify opportunities to expand a regional park and trail system through partnerships
- Identify economic opportunities and funding sources to expand and sustain a comprehensive regional park, trail and open space strategy
- Identify “infill” and access opportunities to underserved communities

The screenshot displays a Miro collaborative workspace titled "Project Onboarding Workshop" with a participant list of "All participants". The interface includes a top navigation bar with "Board", "Edit", "View", and "Help" options, and a toolbar with various drawing and editing tools. The main workspace is divided into several sections:

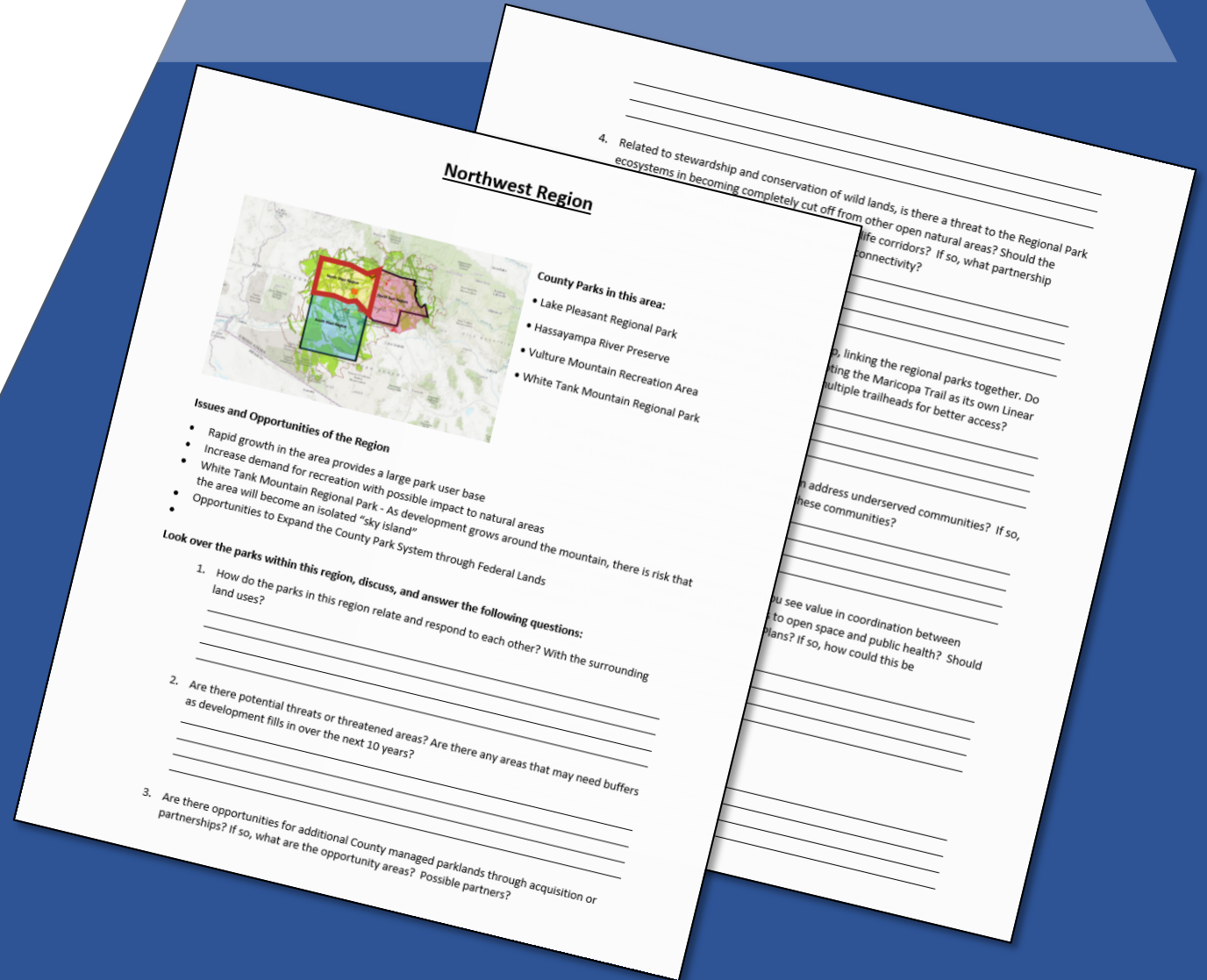
- COACHING AGENDA:** A Gantt-style chart showing tasks for "DAY ONE", "DAY TWO", and "DAY THREE" across a timeline from 11:00 to 12:00.
- Pre-reads:** A section containing two document thumbnails.
- Synthesis:** A central area with various icons (e.g., water drop, lightbulb, scissors) and a name "George" with a green arrow pointing to it.
- Ideation:** A section with image thumbnails and a name "Ben" with a blue arrow pointing to it.
- IDEA PRIORITIZATION:** A graph with colored sticky notes plotted on a curve.
- JOURNEY MAPPING:** A flowchart with a central "Journey" node and branches for "Start", "Middle", and "End", with a name "Jessica" and a purple arrow pointing to it.
- Getting started in 6 steps:** A video player thumbnail at the bottom left.

On the right side, there is a "Moderation" panel for "George Donahue" and a "Conference call" panel for "4 participants". Below these are three video thumbnails of participants: a woman, a man, and another man.

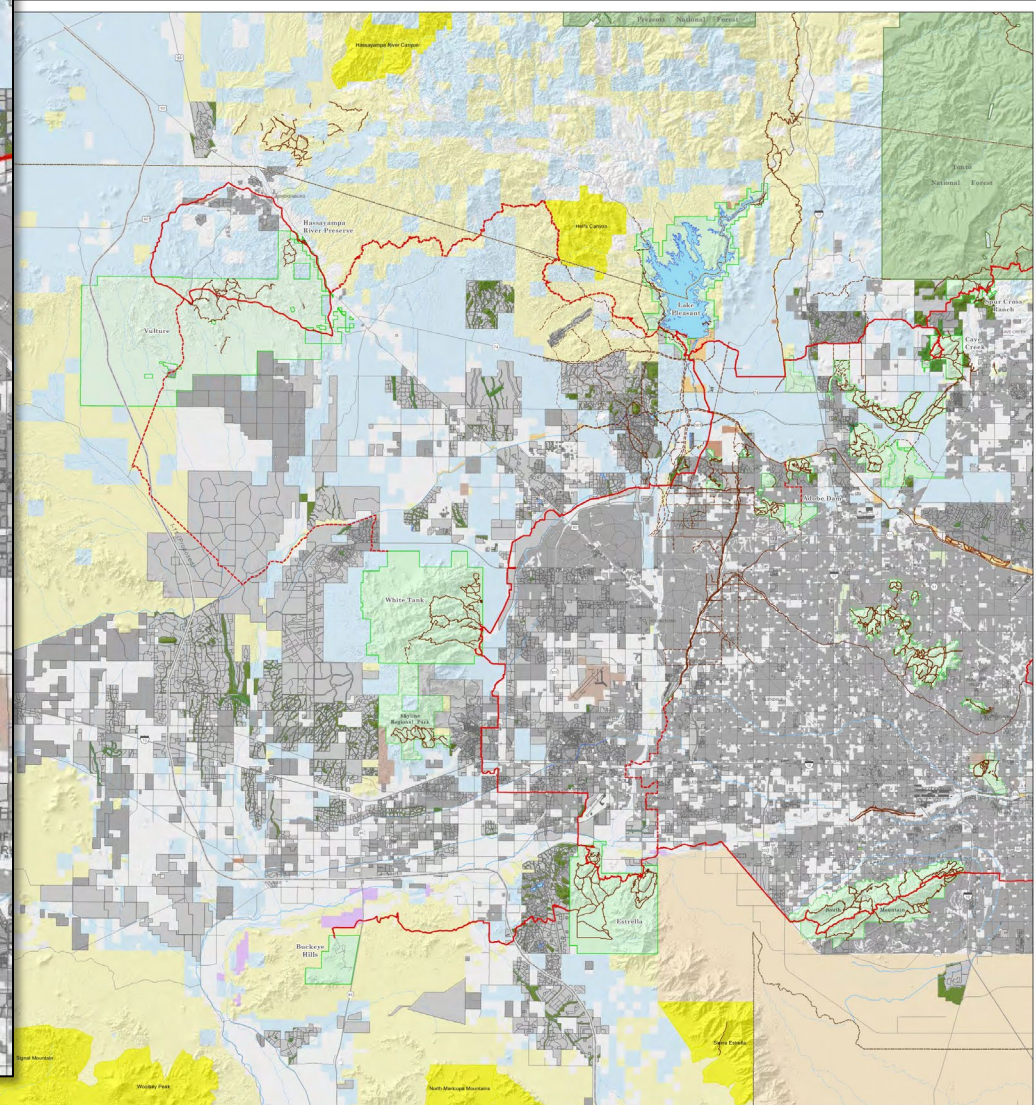
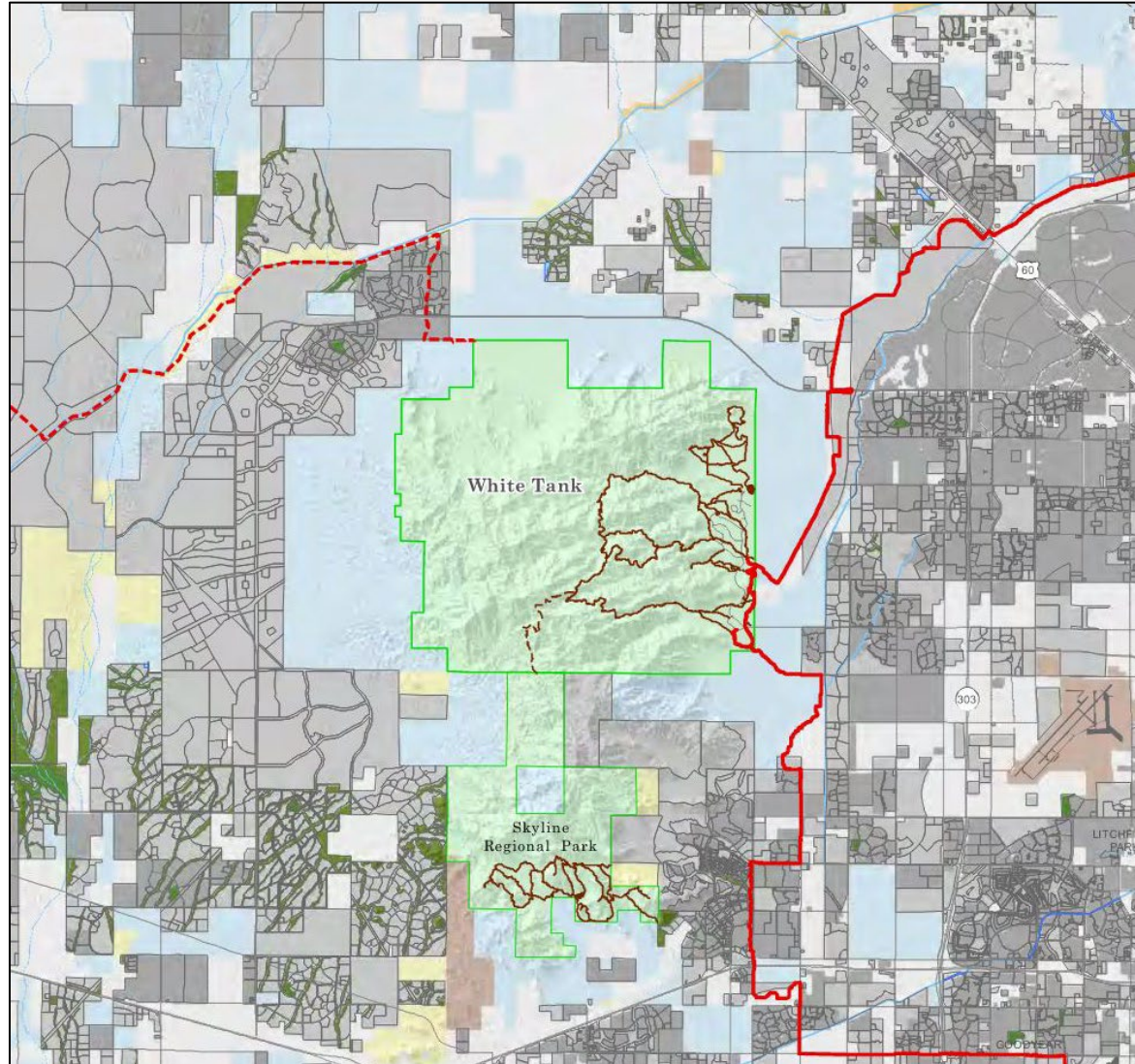
GUIDING THE CONVERSATION

“Continuing the Legacy”

- Identify appropriate areas for expansion
- Expanding a regional park system through partnerships
- Promoting conservation and stewardship
- Meeting visitor recreation needs
- Provide greater access to underserved communities
- Promoting an economically sustainable park system



RESOURCE – PLANNED DEVELOPMENT



Parks and Recreation Master Plan Northwest Region

Existing & Entitled Development

- Regional Park Preserve
- Trail (Existing)
- Trail (Planned)
- Trail (Future)

Subdivisions

- Existing
- Developed or Planned

Open Space in Future Development

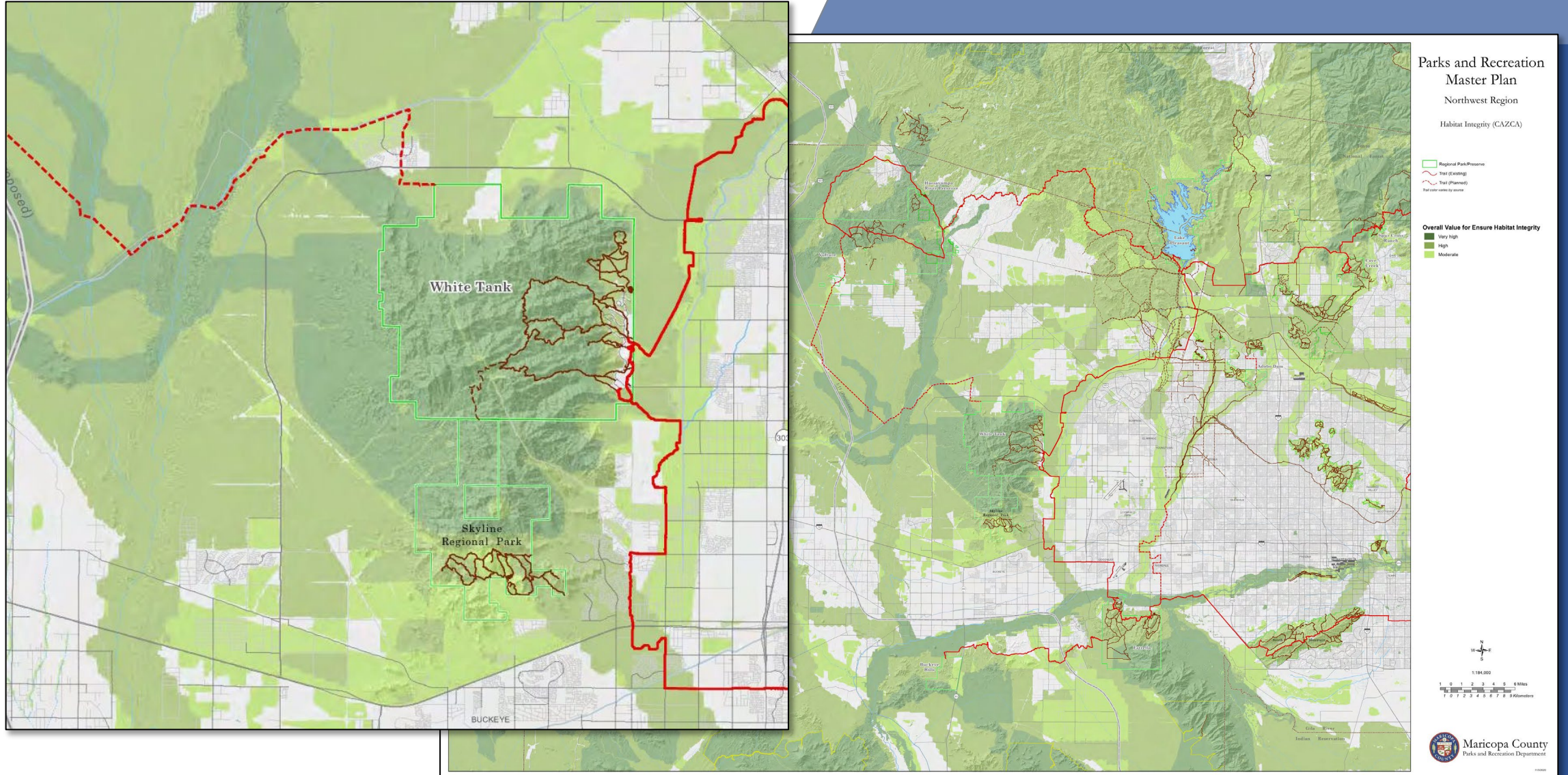
- Agriculture
- City/Regional Active Open Space
- Open Parks and Preserves
- Preserve Open Space
- Restricted Open Space



1:164,000

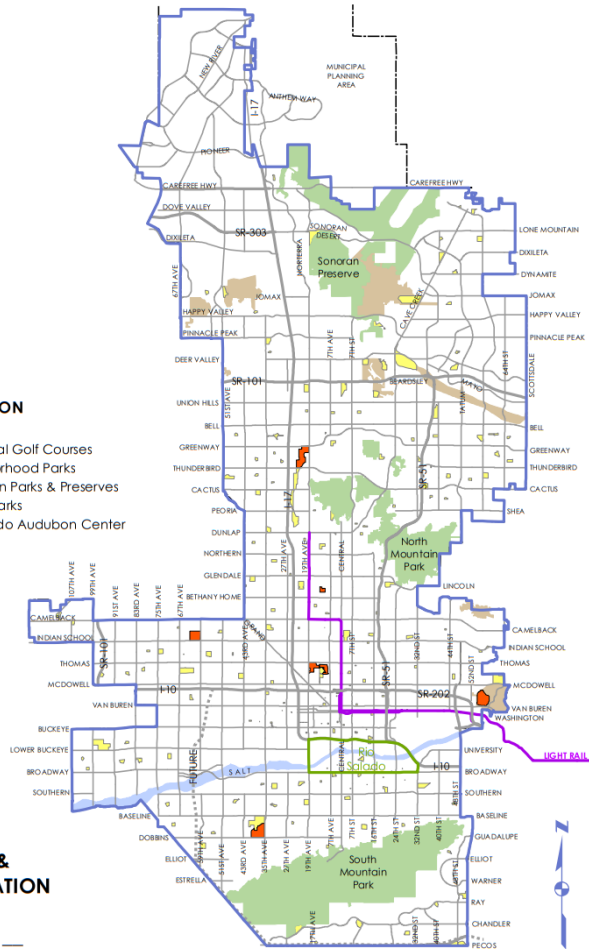


RESOURCE – HABITAT INTEGRITY

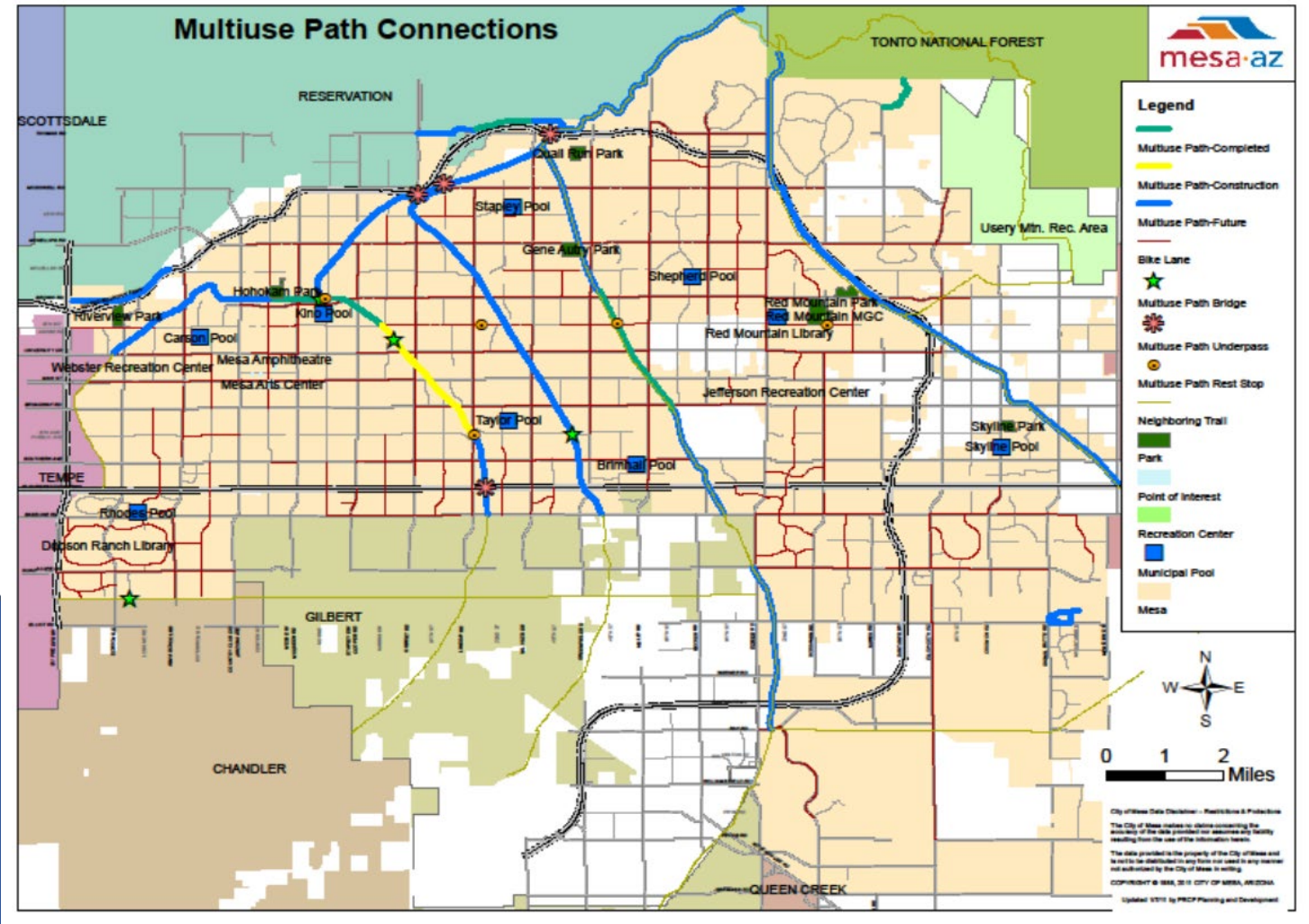


RESOURCE – AGENCY MASTER PLANS

PARKS & RECREATION SITES



PARKS & RECREATION SITES FIGURE

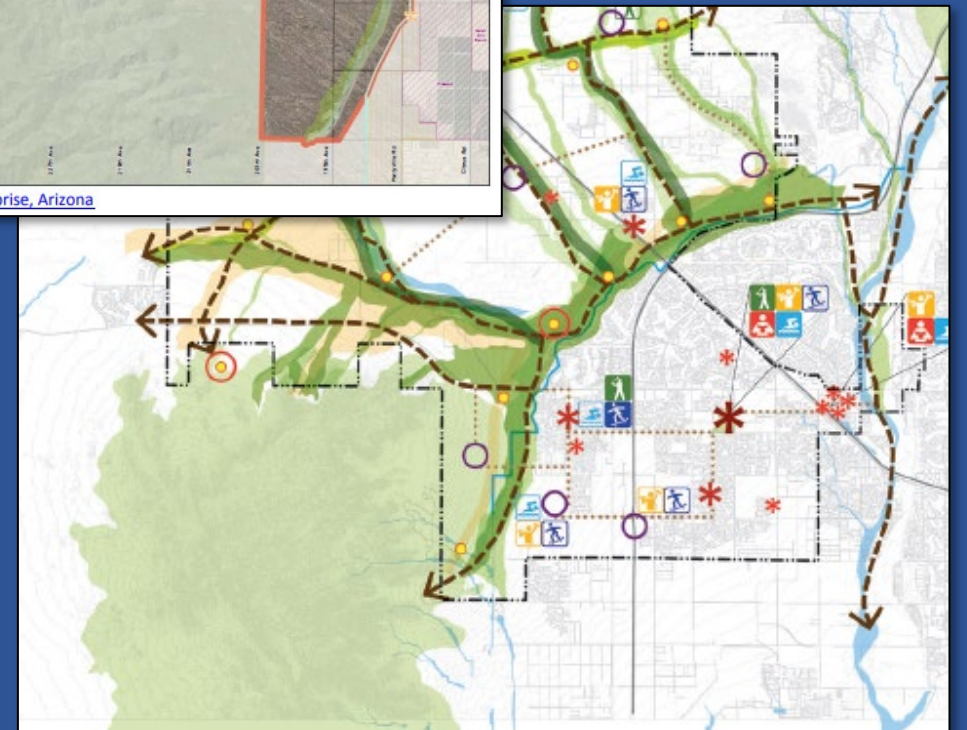
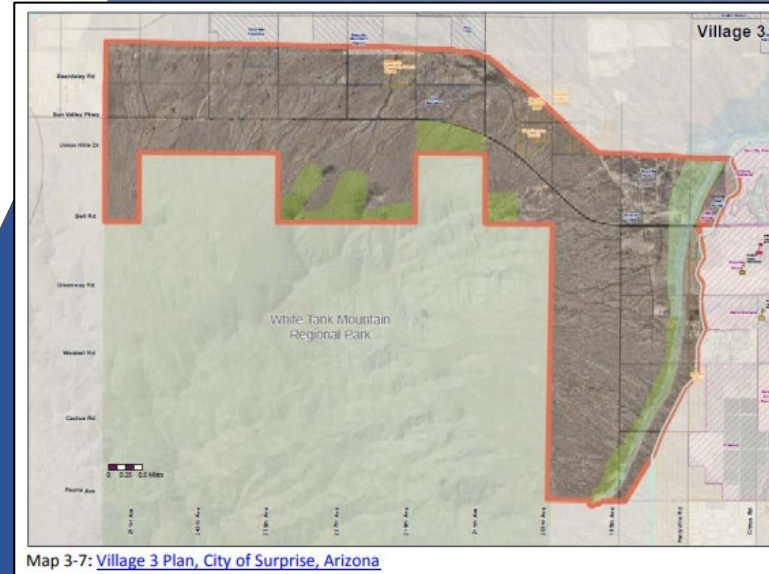


City of Mesa Data Disclaimer - Planning & Protection
 The City of Mesa reserves all rights concerning the accuracy of the data provided on this map and liability resulting from the use of the information herein.
 The data provided is the property of the City of Mesa and is not to be distributed in any form not used in any manner not authorized by the City of Mesa in writing.
 Copyright © 2011, 2010 City of Mesa, AZ/2011
 Updated 1/11 by PRCP Planning and Development

POSSIBLE OUTCOMES

“Continuing the Legacy”

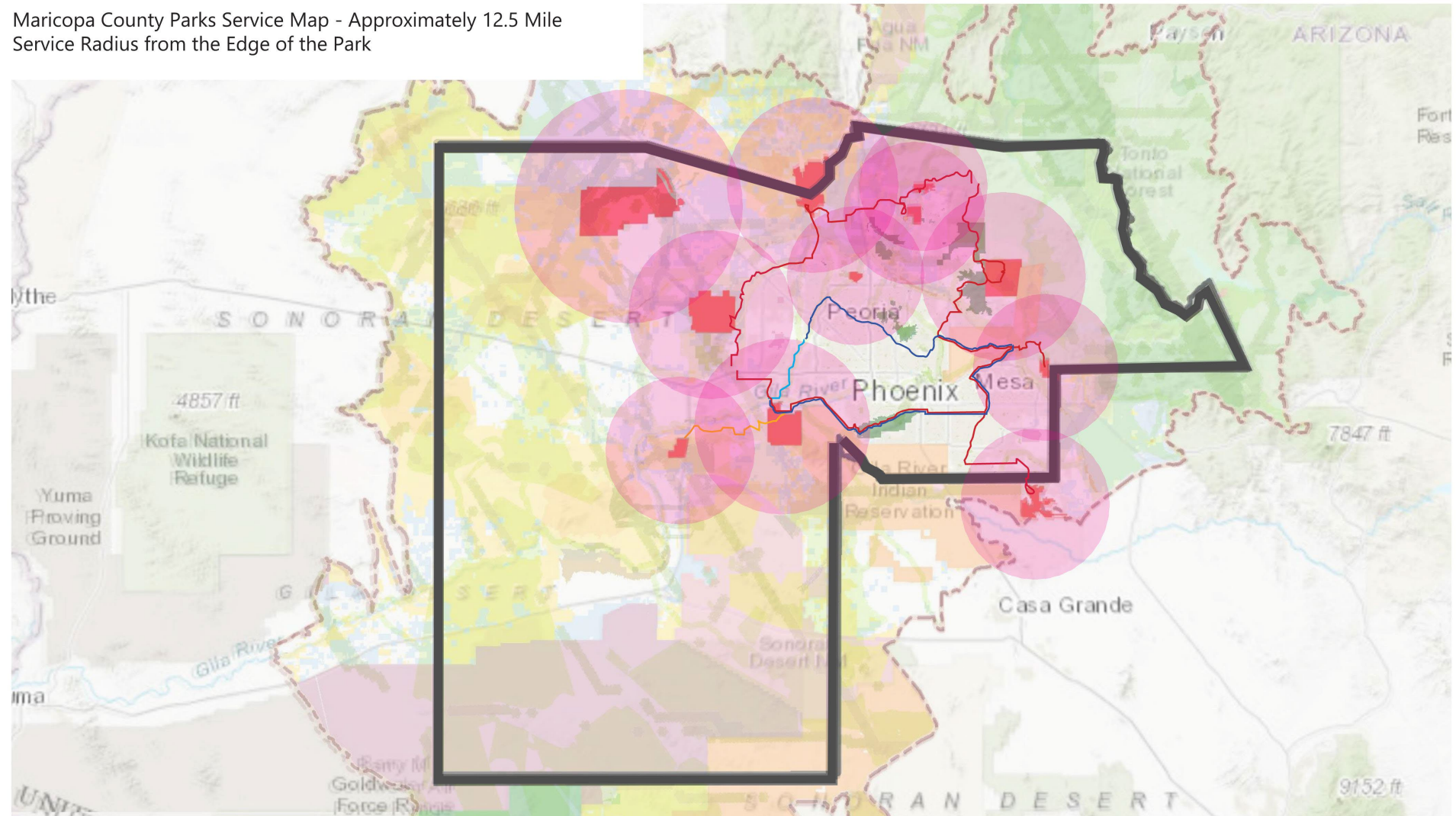
- Opportunities to grow a regional park, open space and trail system ahead of development
- Partnerships with city and government agencies
- New thinking to provide natural landscapes to underserved communities
- Economic strategies to support the larger regional vision
- Conservation management efforts designed for regional sustainability



POSSIBLE OUTCOMES – OPTIMIZING THE EXISTING PARK SYSTEM

- Establishing new park entry points
- Maricopa Trail as a linear park with multiple access points

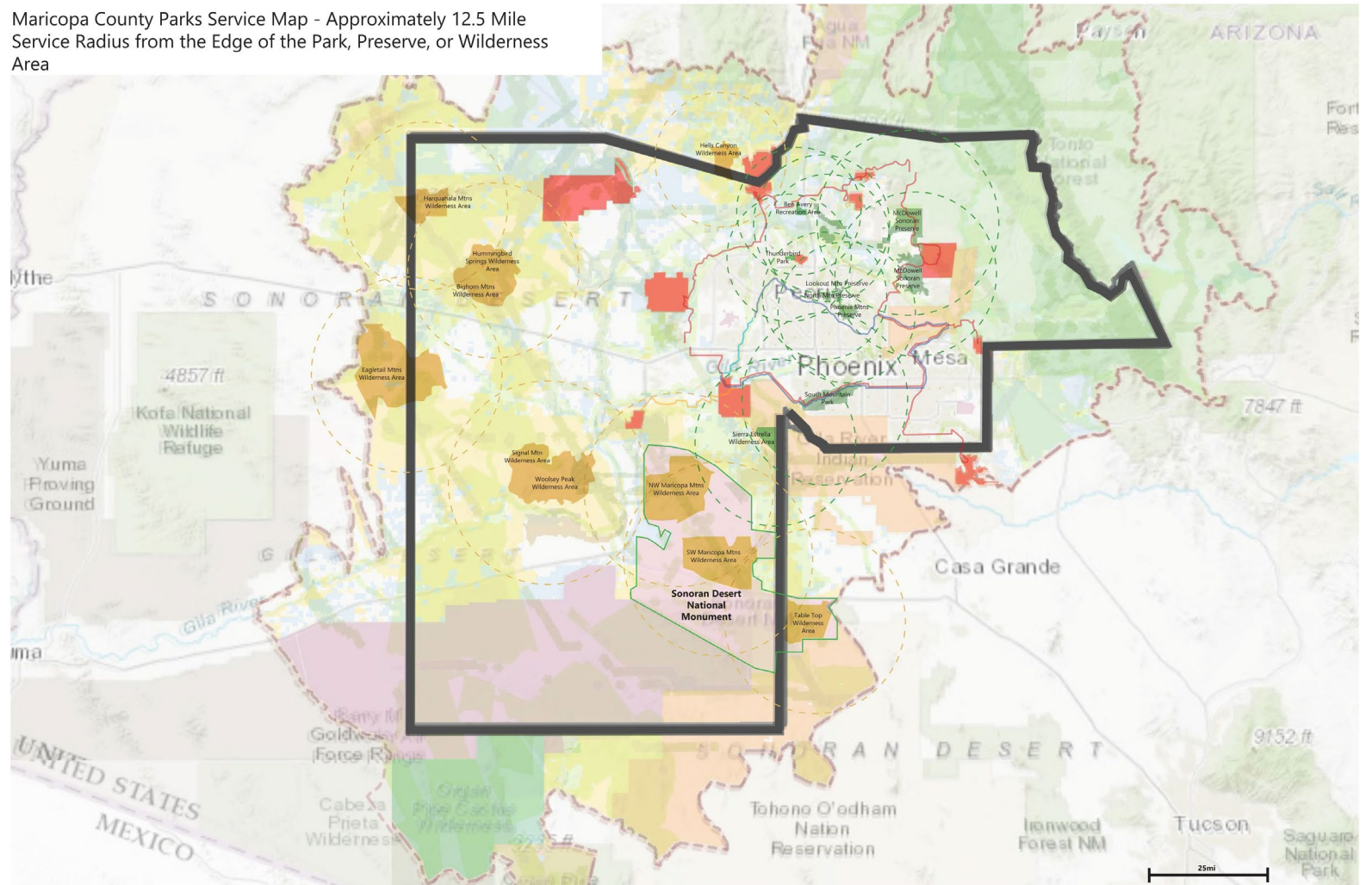
Maricopa County Parks Service Map - Approximately 12.5 Mile Service Radius from the Edge of the Park



POSSIBLE OUTCOMES – OPTIMIZING THE EXISTING PARK SYSTEM

- Identify public lands
- Establish partnerships for open space, wildlife management and recreation

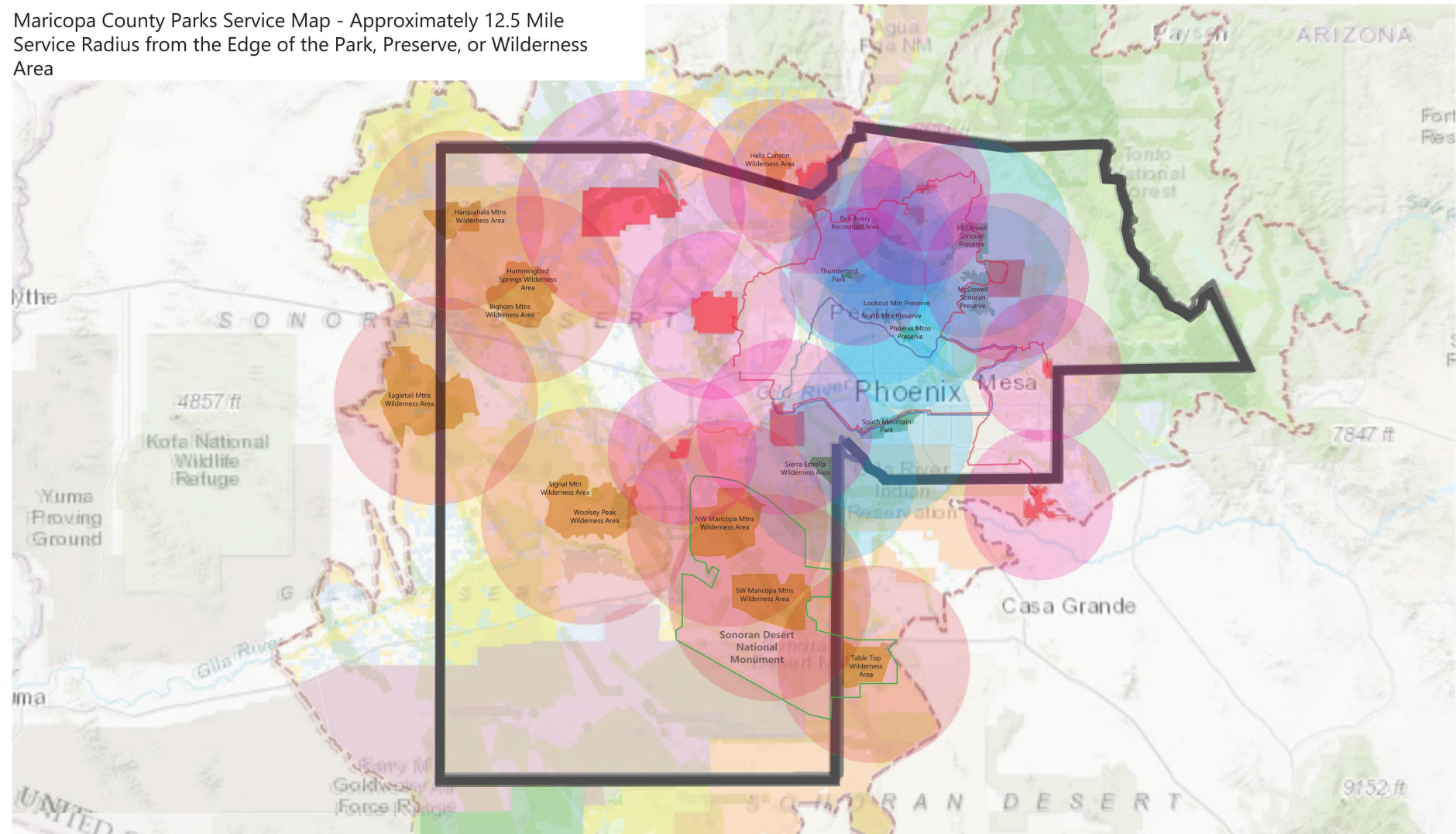
Maricopa County Parks Service Map - Approximately 12.5 Mile Service Radius from the Edge of the Park, Preserve, or Wilderness Area



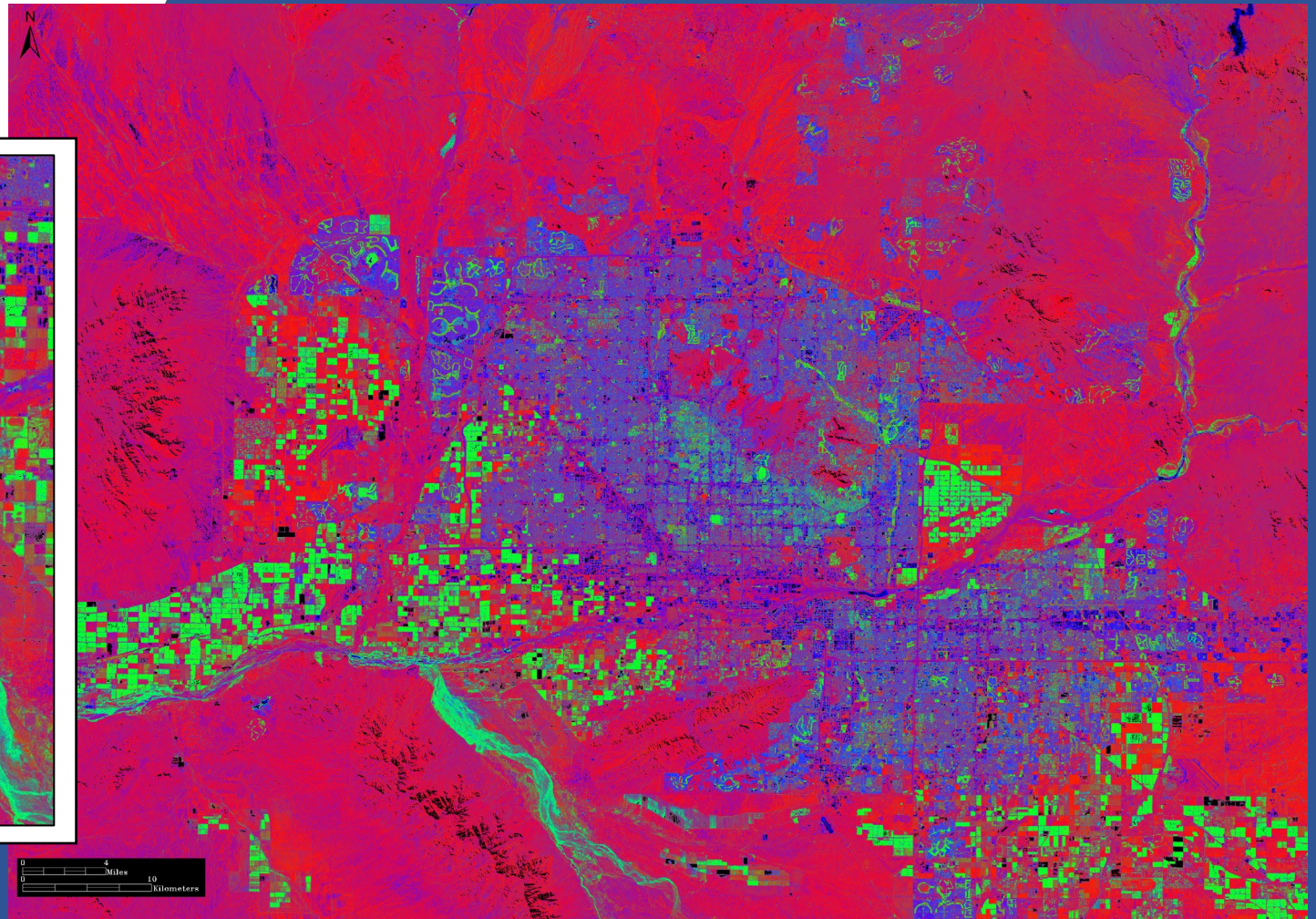
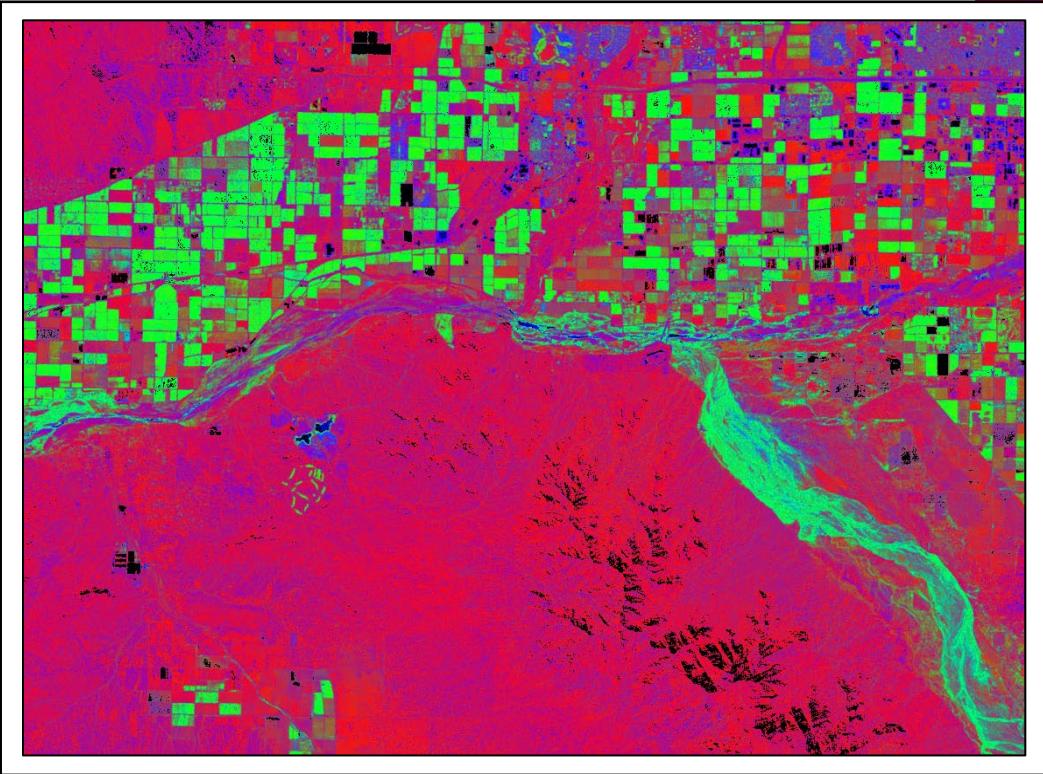
POSSIBLE OUTCOMES - PARK SYSTEM GROWTH OPPORTUNITIES

- Opportunities to expand the park system through partnerships, acquisition and leases
- Forward looking knowing Federal process is long

Maricopa County Parks Service Map - Approximately 12.5 Mile Service Radius from the Edge of the Park, Preserve, or Wilderness Area



POSSIBLE OUTCOMES - HEAT ISLAND CASE FOR GREENING RIVER CORRIDORS AS REGIONAL PARKS



OCT-FEB

2. INITIATE INPUT PROCESS

- Form steering committee
- Define public participation process
- Interview key stakeholders and staff

3. PERFORM INVENTORY AND ANALYSIS

- Cultural and natural resource inventory
- Visitor experience and community needs
- Facility inventory and capital improvement
- Operations and financial assessment
- Economic impact analysis
- Program analysis
- Land use analysis

NOV-FEB

1. OUTLINE PLANNING PROCESS

- Define purpose and need
- Review trends, broad scale issues, and relevant plans
- Identify success over the last ten years
- Define process steps
- Establish the project schedule

4. DEVELOP BROAD GOALS

- Synthesize initial data
- Determine areas of further analysis
- Draft plan goals or issue areas
- Review mission and vision
- Focus Group Analysis

JAN-FEB

ANALYSIS



DEVELOPMENT

COVID BREAK

8. FINALIZE THE PLAN

- Plan approval
- Plan implementation over the next ten years

5. INITIATE PUBLIC PARTICIPATION PROCESS

- Host virtual open-house meetings
- Conduct on-line input
- Refine goals
- Develop objectives

OCT-FEB

7. PUBLIC REVIEW AND REFINEMENT PROCESS

- Draft review
- Final update to the public
- Parks Commission review and input
- Board of Supervisors' review and input

6. PLAN CONCEPTS AND PRIORITIES

- Refine goals
- Establish objectives
- Determine priorities
- Identify key strategies
- Finalize Mission and Vision

FEB-MAR

JUN-SEP

APR-MAY